

TILE TRACE

| TRENDS | COLOUR | PRODUCTS | PROJECTS | ISSUE 5 |



PRODUCT

"Bringing tactile Charm to the surface."

trends

"Discover the latest colours and surface materials."



CONCRETE SHELF LAY.

Welcome to the fifth issue of Tile Trace, where creativity is in full swing! Our journey over the last year has taken us to renowned trend shows such as Heimtextil and Milan Design Week, where we immersed ourselves in the latest trends and emerging colour palettes. By combining these influences and exploring their translation onto tiles, we've curated five main trends for 2023/2024. Additionally, we've been diligently updating our portfolio with cutting-edge products that embrace the leading trends across various surface families, such as stone, concrete, marble, wood, and an array of beautiful, glazed colours. Our commitment to innovation shines through in every aspect of our Portfolio. Lastly, we have updated our projects sector, featuring some of the latest specifications, full of inspiration and captivating design appeal.

Amy Pears

SENIOR DESIGNER.





COLOUR SHELF LAY.

06

| FEATURE |

06
HEIMTEXTIL

08
MILAN DESIGN
WEEK



4 TILE TRACE

10

| TRENDS |

12
GOLDEN ALLURE

16
RAW CONNECT

20
RETRO REVIVAL

24
MAXIMAL PIGMENT

28
TACTILE SENSORY

34

| PRODUCTS |

36
KERASTAR

42
STAMFORD

46
OTTAWA

50
YARRA

54
FUJI

58
NEPTUNITE

62

| PROJECTS |

64
WILLOW PATTERN

68
MOSS BROS

72
LUXX BATHROOM

76

| NEXT ISSUE |

76
NEXT ISSUE

78
CONTACT US

CONNECTIONS

TREND

[noun]

'a general direction in which something is developing or changing.'

Heimtextil returned for the first time since the Covid-19 pandemic. It was extremely inspiring to see the halls full of exciting textures, trends and new colour palettes emerging. There was a strong message of “wow your senses” throughout the exhibition, which had clearly been executed across the different stands. Adding texture to the surface remains essential, combined with rich layering to create impact and add depth to a scheme. Muted colours were in abundance, with shades of green taking centre stage.



Sustainability also had a huge focus at the exhibition. Everyone had their own message and story connected to their brand and products. In the trend hall, the main focus was on the life cycle of materials, known as ‘Circulatory’, with zero impact on the

environment. It was split into 2 areas: Technical Cycle, referring to human-made material, and the Biological cycle, made from nature itself. Both of these have the same outcome; life cycle and reuse.

Texture remains essential, combined with rich layering to create impact and depth.



MILAN

TRENDS 23 / 24

EARTHY

[adjective]

'resembling or suggestive of earth or soil.'



Milan design week returned earlier this year for its annual design festival. Featuring the Salone del Mobile, the key design districts opened their showroom doors launching new products for 2023. Throughout the week, there were many exciting trends and emerging colour palettes, but the main theme that echoed throughout the stands and showrooms was the key message of sustainability along with different ways and methods of incorporating circular design.

In addition, everything had a refined touch, with fluid lines and a minimalistic approach. The design districts were filled with warmer tones, in particular shades of brown hues were coming through strongly, reflecting a retro aesthetic with curved edges and earthy tones. Blurring the lines between the

past and the present, echoing nostalgia by injecting a mix and match feel into a contemporary finish. We're certainly seeing a transition happening from grey hues to these warmer, earthy hues which will continue to grow through the interiors sector.



"Reflecting a retro aesthetic with curved edges and earthy tones."

TRENDS



BIANCO FLAT LAY.



IMAGE CREDIT: TEKURA.



| CONNECTED | ESCAPISM | OPTIMISTIC |

The main trend drivers for 2023/2024 are escapism, optimism, and connectivity to the outside world. The combination of calming and positive colours and textures has a significant impact on our well-being and focus. These elements form the main foundations for the emerging key trends, where design aspects from each driver are harmoniously blended. Additionally, sustainability stands out as a rapidly growing trend, noted at various trade fair shows this year. With a focus on "circular design" that carefully considers the life cycle of materials.

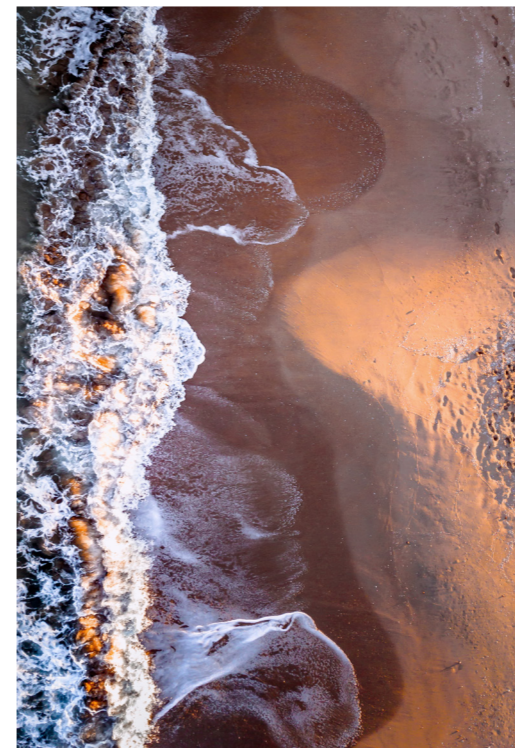
GOLDEN *allure*



| DEPTH | NATURE | TRAVEL |

Golden Allure is a fusion of finding escapism through nature and travel, while also looking to the future. The connection between fluid lines and organic movement combined with curved shapes, creates a retro-futurism aesthetic. Introducing translucent surfaces is key, with layering and variation of colour adding depth and interest. Grounded with a colour palette of nature-inspired warm blues and golden yellows, paired with alluring purples and pinks to create a balanced, contrasting palette perfect for any commercial space.

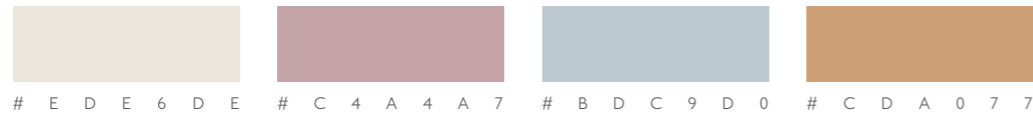
"Fluid lines
and organic
movement
combined
with curved
shapes."



ALLURE

[noun]

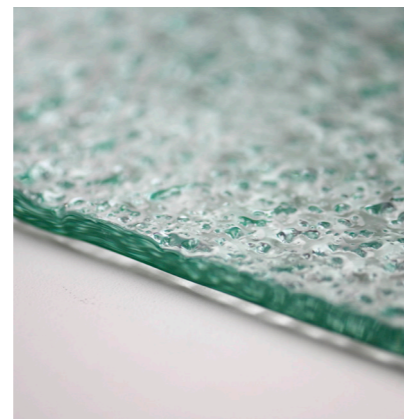
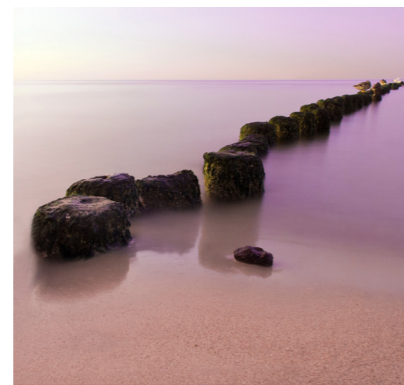
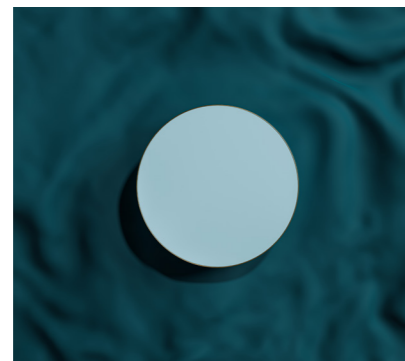
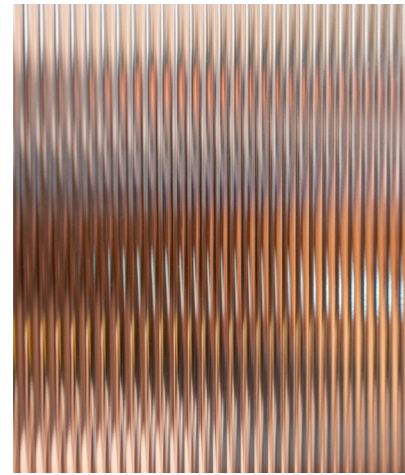
'the quality of being powerfully and mysteriously attractive or fascinating.'



| OPTIMISM | TRANSLUCENT | FUTURISM |

By choosing our Luxx range of striking marbles, you can effortlessly capture depth and layers, while also adding character through distinctive patterning. For a vibrant touch, consider playing with bold colours from our Contour

range, which can serve as a striking main feature with the added addition of the fluid décor. To bring balance to any space, complement the bold colours with soft neutrals.



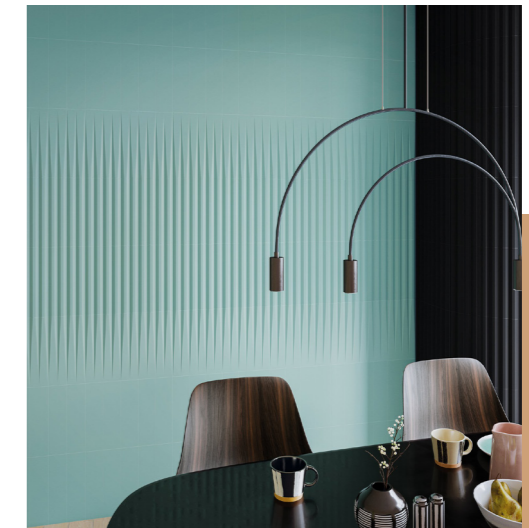
CONTOUR - GARNET, CNT08D.



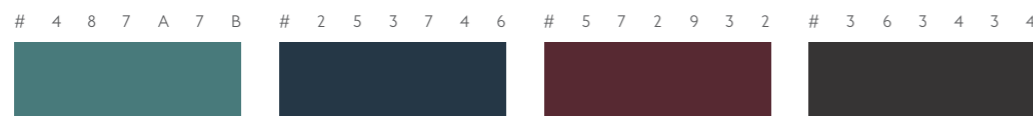
LUXX - GREIGE ONYX, LUX06P.



TUSCANY - TUS01M, TUS03G, TUS04G, TUS05G, TUS09G.



CONTOUR - TEAL, CNT05A, CNT05T & CNT05D.



TRANSLUCENT

[Adjective]

'(of a substance) allowing light, but not detailed shapes, to pass through; semi-transparent.'

RAW *Connect*



| CONNECT | BIOPHILIC | NATURAL |

The main drive behind Raw Connect is still the strong desire to connect to the outside. However, there is a shift in direction with more focus on a refined approach. Bringing natural textures inside creates a calming and positive space in a commercial or interior setting, echoing a strong Biophilic aesthetic. Alongside this, Scandinavian vibes also play an important role, with Japandi style at the forefront, echoing organic forms and soft lines that instantly create warmth and natural balance.



IMAGE CREDIT: TEKTURA.

"Bringing natural textures inside creates a calming and positive space."



CONNECT

[verb]

'bring together or into contact so that a real or notional link is established.'

F A F 9 F 6

D C D 4 C 9

A I 7 2 4 9

6 5 4 E 4 4



IMAGE CREDIT: TEKTURA.

A E A 3 9 6

A A B 6 C 2

6 A 6 8 5 I

7 6 7 I 6 B

| JAPANDI | CALM | NATURAL |

The perfect combination for introducing natural textures is through ceramic surfaces. Consider our Haven and Stamford ranges which will effortlessly add depth and tactile interest to any space. The Haven range captures

organic movement, while the Stamford range combines stone and wood for a textural contrast. Together, they create a biophilic finish that brings the beauty of nature indoors.



STAMFORD - BONE, SMF01N & SMF01W.



MELROSE - BONE, MELRIA & SLATE, MELR5A.



MILANO - MOSS, MIL05N & BASALT, MIL06N.



HAVEN - SAND, HAVEID.

MINIMAL

[Adjective]

' of a minimum amount, quantity, or degree; negligible.'

RETRO *Revival*

"Colour reflects warmth, with rich undertones of burnt orange and burgundy."



| RETRO | CURVED | NOSTALGIA |

Nostalgia is certainly the buzz word at the moment, with the 70's having a strong presence within the interior world, where curved lines are introduced through furniture and alcoves. The retro feel is now translating perfectly to the tiling sector, through colour, texture and styling. The colour palette reflects warmth, with rich undertones of burnt orange and burgundy. Paired with lighter neutrals and accents of muted blue for a balanced offer.



WARMTH

[noun]

'the quality, state, or sensation of being warm; moderate heat.'

IMAGE CREDIT: TEKURA.



| MUTED | OPULENT | EARTHY |

Be playful with coloured tiles having muted, earthy tones reflecting a retro vibe, our Milano range is perfect for this. Explore tonal colour blocking for a dramatic look, adding personality while defining a space. Opt for more daring tones for a strong statement, to soft

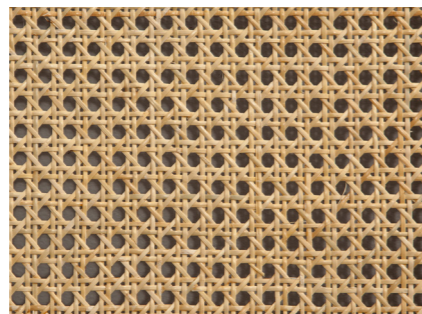
neutrals for a subtle approach, either works well transforming any space. For a more opulent finish, dark marbles with distinct pattern movement and warming tones will add character with a stylish finish.



IMAGE CREDIT: TEKURA.



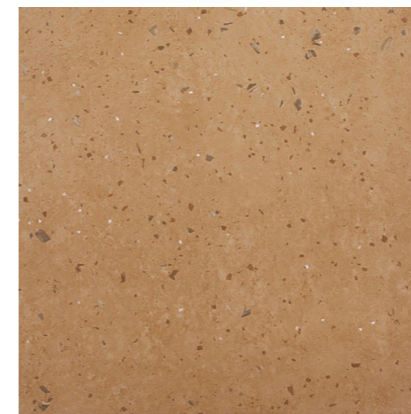
IMAGE CREDIT: TEKURA.



MILANO - SKY, MIL02N & COTTO - MIL03N.



SOUTH BANK - PEARL, SBK02A.

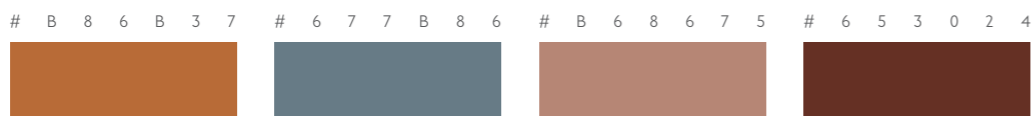


ORBY - TERRACOTTA, ORB03N.

NOSTALGIA

[noun]

'a sentimental longing or wistful affection for a period in the past.'



MAXIMAL

Pigment



IMAGE CREDIT: TEKTURA.

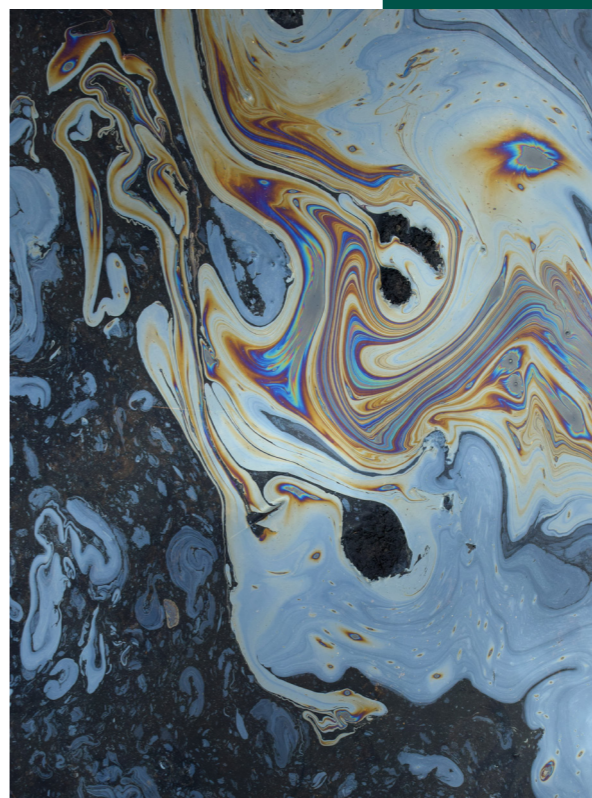
| BOLD | EXPRESSIVE | RICH |

Maximal pigment sits firmly within the key trend of a maximalism approach, with bold finishes and expressive notes at the forefront. This is made up of strong rich tones that work well together and stand alone. There is a playful hint to this trend where colour blocking and chequered themes work very well against the strong pigment colour palette, creating stylish statements and focal points across commercial and residential spaces.

MAXIMAL
[adjective]
'of or constituting a maximum; as great or as large as possible.'



IMAGE CREDIT: TEKTURA.



"Adding block colour brings impact and character to a space."

F A F 9 F 6
 # D C D 4 C 9
 # B B 2 6 4 9
 # B 5 3 3 2 E

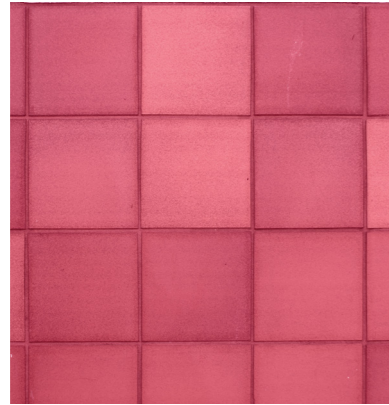
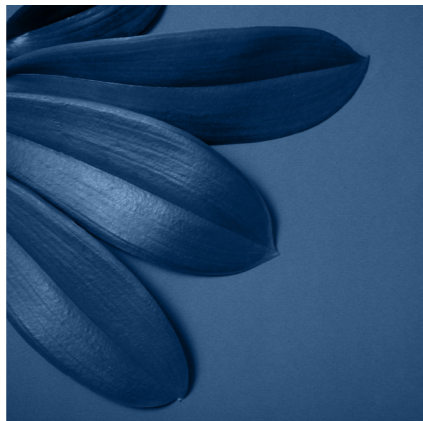


IMAGE CREDIT: TEKTURA.



0 0 5 3 4 8
 # 0 7 4 8 5 B
 # 2 0 2 7 4 8
 # 1 1 1 1 1 1

| DYNAMISM | COLOUR | CHEQUERED |

Design your settings with dynamic and stylish elements by incorporating colour blocking. Utilise solid colours such as our Kerastar range resulting in clean lines and a sophisticated atmosphere. Create a tonal feature with our South Bank range, where the rich Azure shade will add depth and

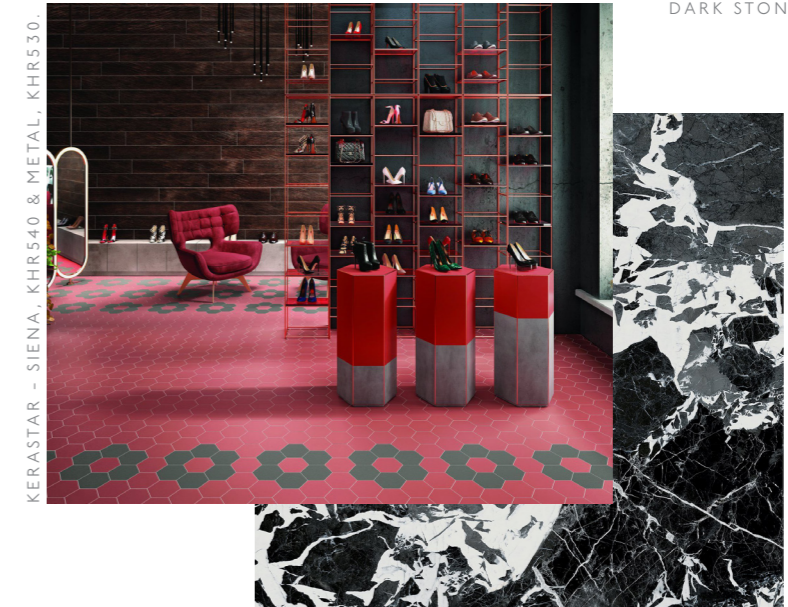
visual interest. Allow your creativity to shine and create a bold statement by using our Tuscany range in a zigzag pattern or opulent Marbles with striking movement, both will add a dramatic feel adding extra visual appeal to your design.



TUSCANY - WHITE, TUS03G & EBONY, TUS09G.



SOUTH BANK - AZURE, SBK06A & TERRAZZO - DARK STONE, TRZ02T.



KERASTAR - SIENA, KHR540 & METAL, KHR530

EXPRESSIVE

[Adjective]

'effectively conveying thought or feeling.'

TACTILE

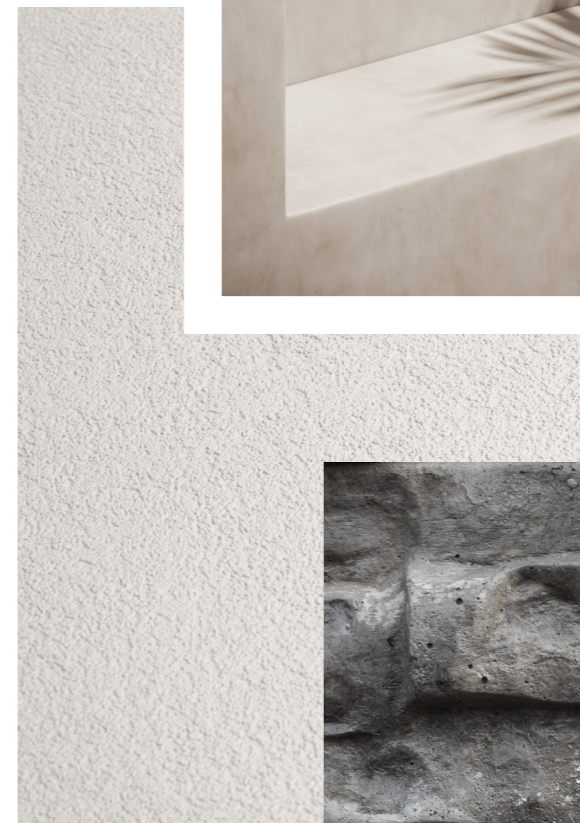
Sensory



IMAGE CREDIT: TEKTURA.

| TACTILE | SENSES | DEPTH |

In the world of tiles, the relationship between texture and tactility go hand in hand. Our initial interaction with tiles engages multiple senses, including sight, touch, even sound and smell can play a role. Certain colours can evoke specific scents, and the surface produces a distinct sound when touched, capturing a sensory approach on design. In return, we are seeing a strong directional shift, where this is a crucial design element, whether through organic texture or patterned designs, both elevate the tile surface, bringing a sense of depth and movement to the space.



SENSORY

[Adjective]

'relating to sensation or the physical senses; transmitted or perceived by the senses.'

| SURFACE | MOVEMENT | ELEVATE |

Creating a sensory interior could not be easier. By introducing various surface detail such as our Baseline Wall décors, this will instantly enhance the overall visual appeal of the design, while creating balance and harmony through

the natural symmetry of the pattern. Alternatively for a more natural texture opt for our Haven Sandbar décor, which draws inspiration from the outside, introducing tactility and calmness to the space.

F A F 9 F 6



D C D 4 C 9



A E A 3 9 6



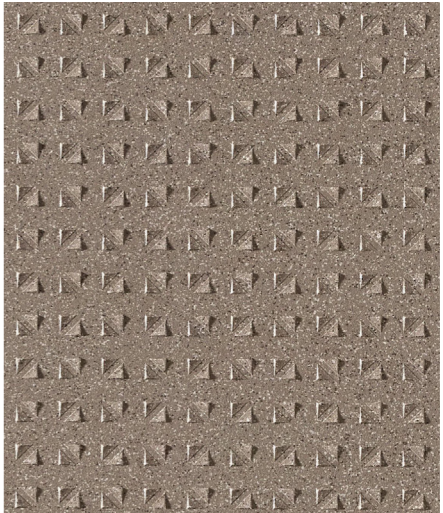
7 6 7 1 6 B



HUDSON - ALBANY WHITE, HUDS1S & BROOKLYN, HUDS4N.



BASELINE WALL - DOVE TIP STRUCTURE, BAS03T.



KERASTAR - MOCHA SPECKLE TEXTURED TRIFACE, KET563.

TACTILE

[Adjective]

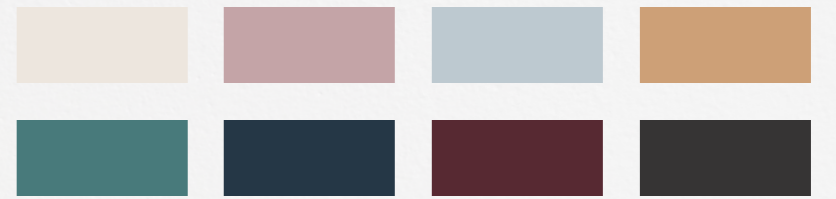
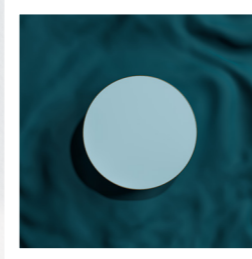
'designed to be perceived by touch.'



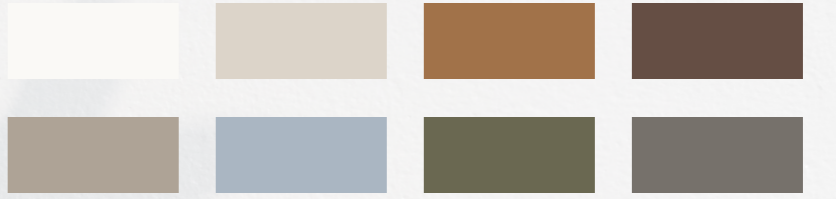
COLOUR



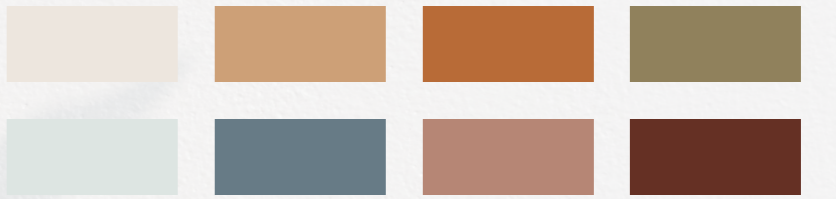
SAVOY - SAGE, SAV09A & SLATE, SAV12A.



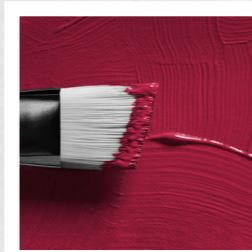
GOLDEN ALLURE



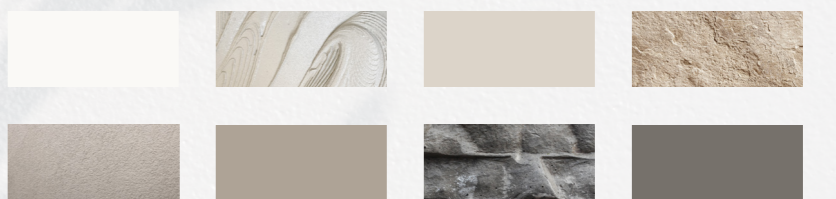
RAW CONNECT



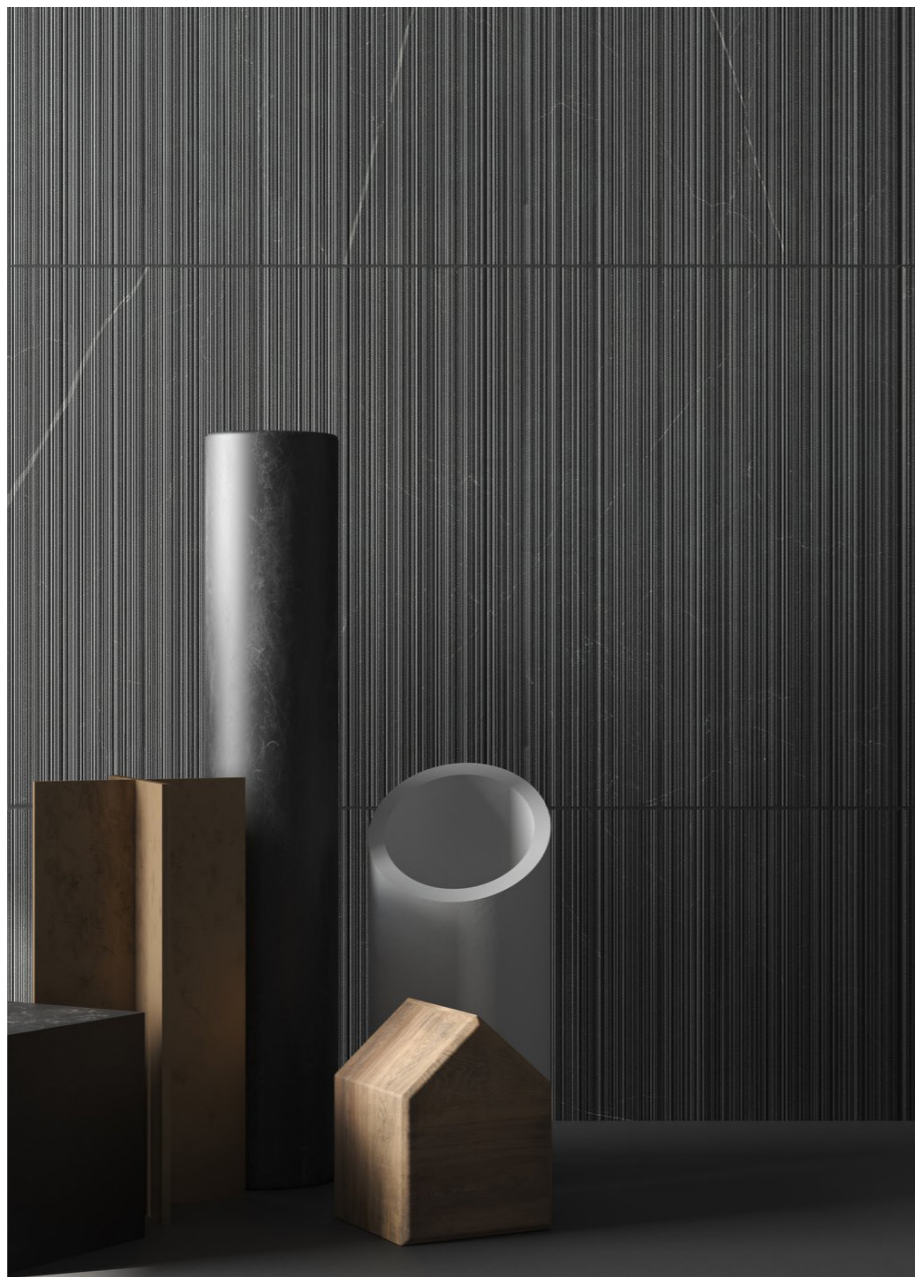
RETRO REVIVAL



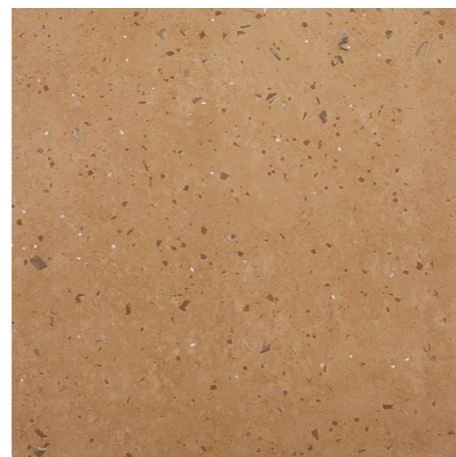
MAXIMAL PIGMENT



TACTILE SENSORY



BUCKINGHAM WALL - ANTHRACITE LINE STRUCTURE, BUCK4L.



ORBY - TERRACOTTA, ORB03N.

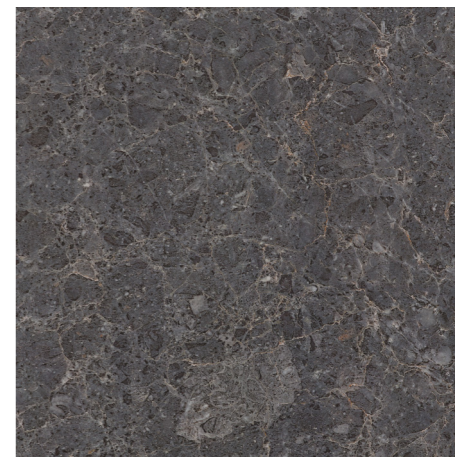


STAMFORD - BONE, SMF01N.

& WOOD BONE, SMF01W.



BASELINE WALL - DOVE TIP STRUCTURE, BAS03T.



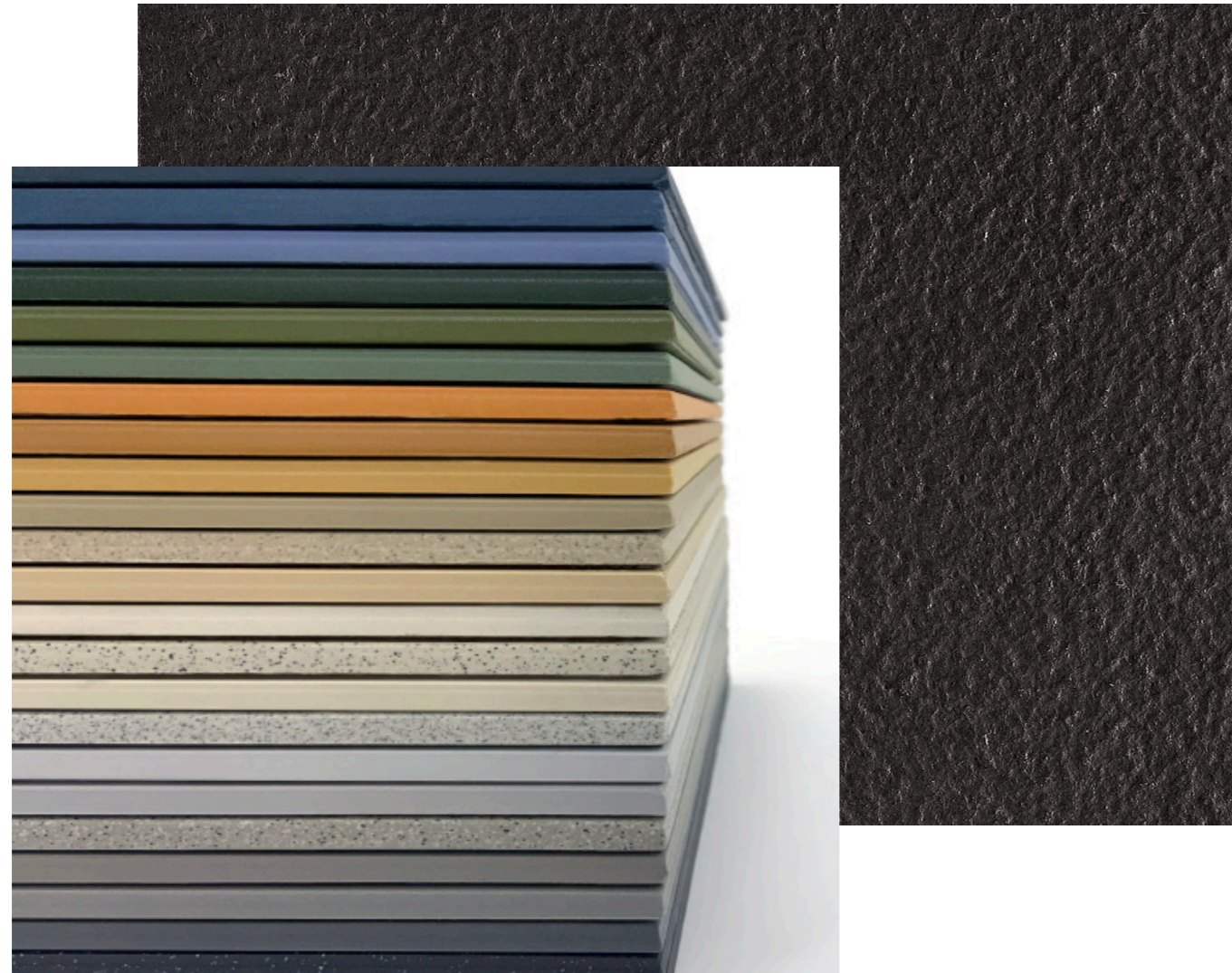
OTTAWA - ANTHRACITE, OTA04N.

| ORGANIC | DETAIL | INNOVATIVE |

We continuously research and work towards creating and introducing innovative products that reflect the latest key trends, and simplify the process of specification. In this issue, we feature large organic movement and beautiful textures for added depth and interest. These include, Solid colour, Concrete, Wood, Marble and Stone effect styles, covering both internal and external applications, perfect for creating the seamless transition from indoor to outdoor. All of these will provide ample inspiration for your next project.

KERASTAR

| SPECTRUM | SPECKLE | TEXTURE | SHAPE |

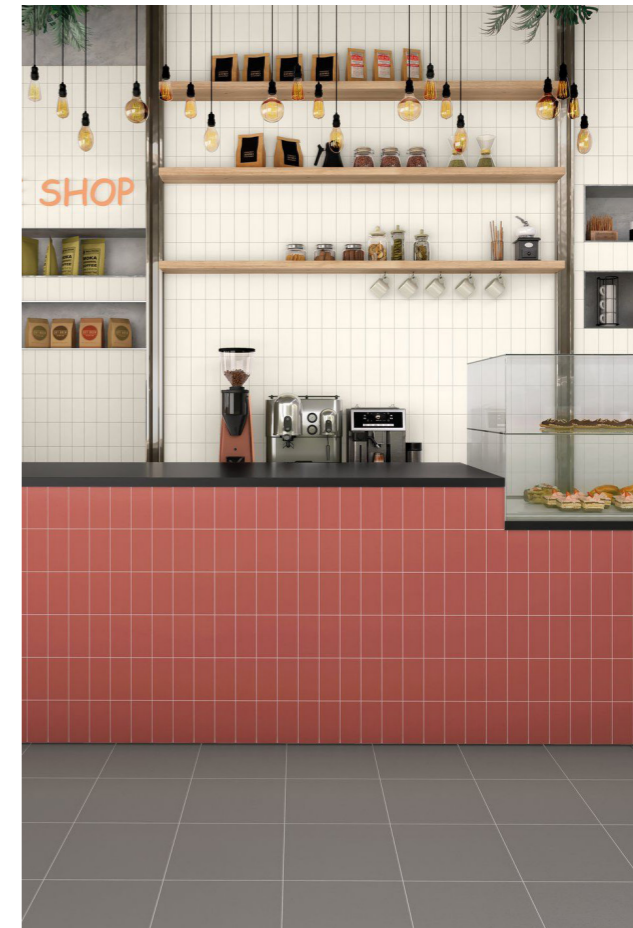


Developed specifically for the commercial interiors market, This unglazed porcelain collection offers complete versatility, having 43 colours to choose from, with 11 sizes from dynamic small-formats of 100x100mm and 150x75mm up to minimalistic large-formats of 890x890mm and 1190x600mm, along with stylish Hexagons for added visual interest. Kerastar is perfect for injecting some colour into a scheme or keep it sleek with a monochrome effect using the neutrals.

COLOUR

[verb]

'a band of colours, as seen in a rainbow, produced by separation of the components of light by their different degrees of refraction according to wavelength.'

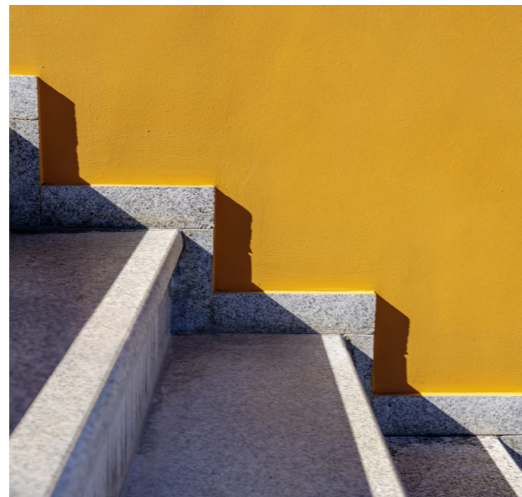
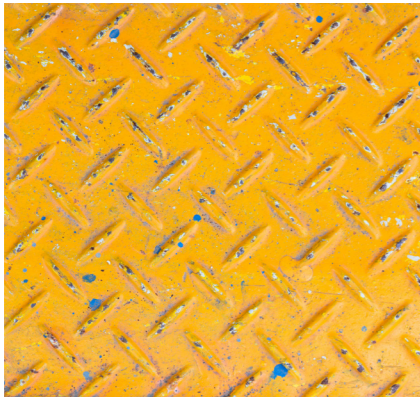


KERASTAR - CHALK, KEM501, SIENA, KEM540, & METAL, KER530.



KERASTAR- CHALK, KER501 & NIGHT, KER508.

KERASTAR



KERASTAR - BRONZE, KER537 & NIGHT, KER508.

Combine commercial elegance and high slip resistance with the Textured Rocktop, Triface and Suretread Hexagon structures, all achieving a PTV slip resistance rating of 36+ in both dry and wet areas. Fittings within this range include battiscopa and cove skirtings along with steptreads, making Kerastar the ideal flooring solution for commercial specifications.



KERASTAR - MARINE, KER544 & DENIM, KER542.



KERASTAR - KHAKI, KER539 & CLAY, KER506.

Kerastar features an impressive 43 colours, spanning the entire spectrum. Choose from architecturally inspired tones of Linen and Ivory or try bolder shades of Mustard and Siena for an injection of primary colour. Mix and match for a design scheme that showcases creative freedom, or keep it solid for a trend lead colour block effect.

Size guide...

1	1190 X 600MM
2	890 X 890MM
3	600 X 600MM
4	600 X 300MM
5	300 X 300MM
6	200MM HEX
7	100MM HEX
8	200 X 200MM
9	150 X 150MM
10	100 X 100MM
11	150 X 75MM

43 COLOURS
11 SIZES
4 FINISHES

STAMFORD

| CONNECT | PORCELAIN | NATURAL | CONCRETE |



STAMFORD - PEBBLE, SMF03N & WOOD PEBBLE, SMF03W.

This extensive collection seamlessly features concrete and wood effect, offering surface variation while flowing perfectly together. The large-format concrete effect tiles exude a realistic simplicity, ideal for minimalist interiors. Meanwhile, the wood effect planks infuse a touch of nature-inspired elegance, perfectly aligning with our Raw Connect trend. Additionally, the Geometric Décor glazed ceramic wall tiles feature origami-like patterns, reminiscent of the Japandi trend, adding a modern touch adaptable to any space.



STAMFORD - BONE, SMF01N & WOOD BONE, SMF01W.



SURFACE
[noun]
'relating to or found on the surface of something.'



STAMFORD - SILVER, SMF02N & WOOD SILVER, SMF02W.



S T A M F O R D



STAMFORD - BONE, SMF01N.



STAMFORD - BONE, SMF01W.



STAMFORD - BONE, SMF01D.



STAMFORD - SILVER, SMF02N.



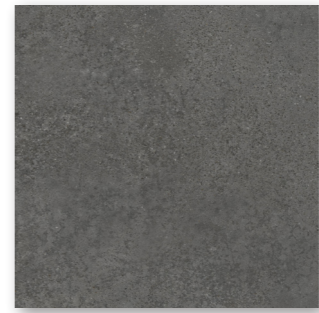
STAMFORD - SILVER, SMF02W.



STAMFORD - SILVER, SMF02D.



STAMFORD - PEBBLE, SMF03N.



STAMFORD - CHARCOAL, SMF04N.



STAMFORD - PEBBLE, SMF03W & CHARCOAL, SMF04W.



O T T A W A

| STONE | LIMESTONE | NATURAL | TACTILE |



OTTAWA - TAUPE, OTA02N.

ottawa is a stunning stone-effect glazed porcelain floor and wall tile range with elements reminiscent of limestone, granite and marble. The four colourways of White, Taupe, Silver and Anthracite are all offered in a smooth, natural finish, with large-format sizes of 1186x592mm and 592x592mm: great for fewer grout lines. Pair the field tiles with the matching square mosaics and co-ordinating skirting tiles for an authentic look that exudes modern luxury.



LIMESTONE

[noun]

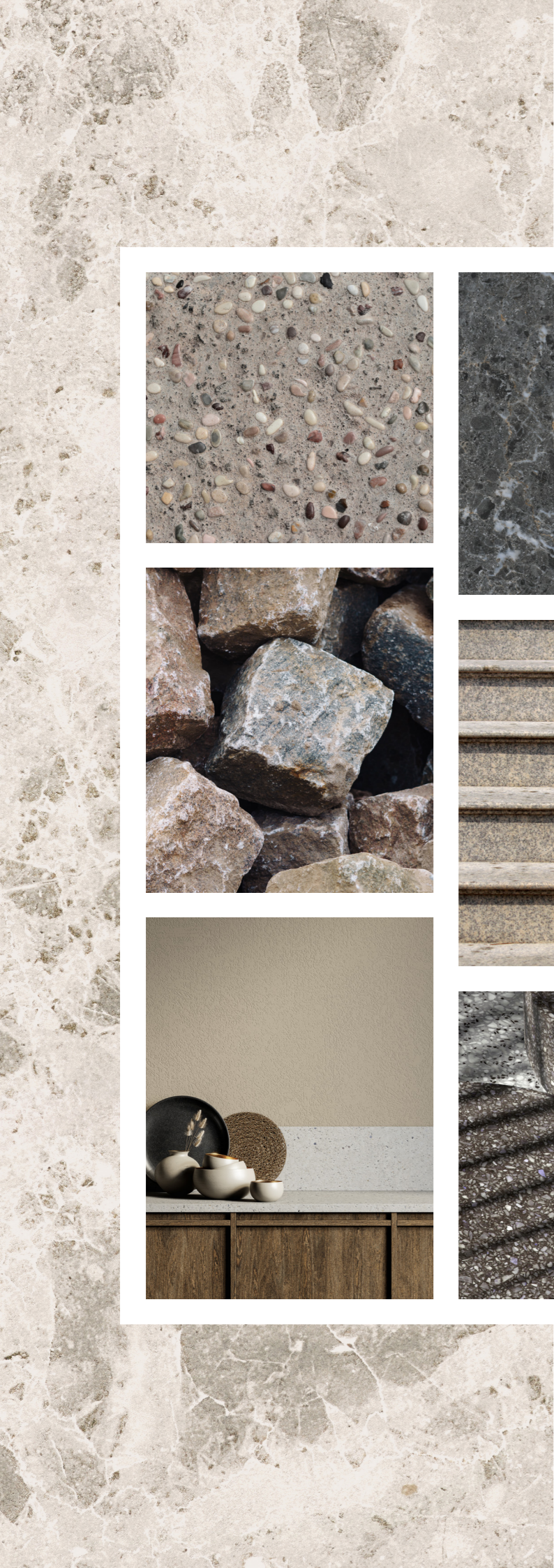
'a hard sedimentary rock, composed mainly of calcium carbonate or dolomite, used as building material and in the making of cement.'



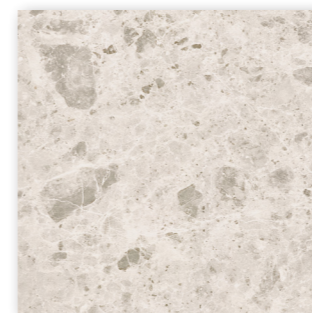
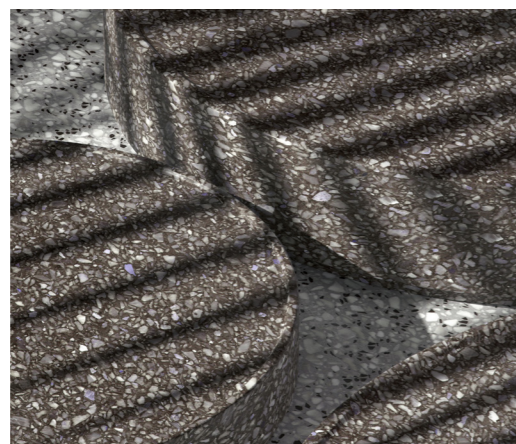
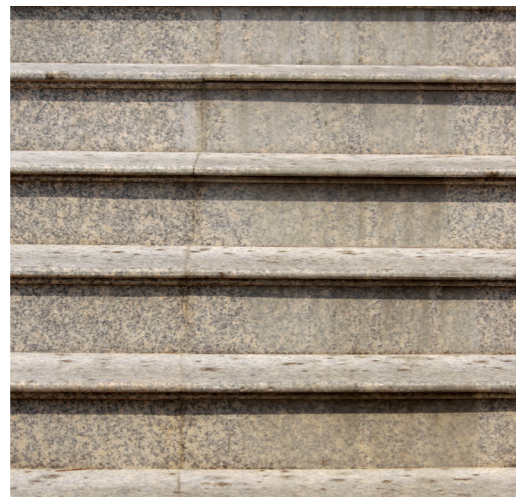
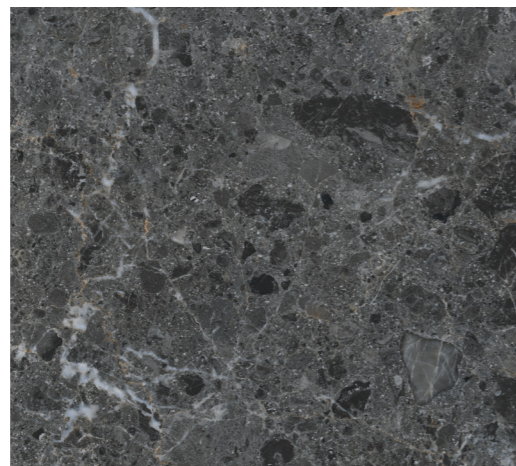
OTTAWA- TAUPE, OTA02N & ANTHRACITE, OTA04N.



OTTAWA - WHITE, OTA01N & ANTHRACITE, OTA04NM.



O T T A W A



OTTAWA - WHITE, OTA01N.



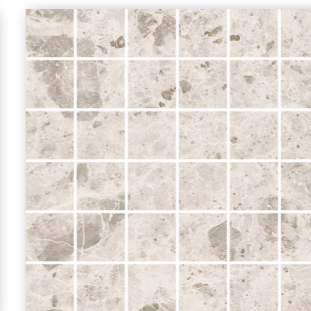
OTTAWA - TAUPE, OTA02N.



OTTAWA - SILVER, OTA03N.



OTTAWA - ANTHRACITE,
OTA04N.



OTTAWA - MOSAIC
ALL COLOURS.

Ottawa is an ideal product for introducing a sensory design that incorporates tactility, and can adapt to any space. This design concept captures organic movements and adds depth through the use of a subtle shimmer

print, while still maintaining a nature-inspired feeling that echoes the Raw Connect trend. As a result, these two key trends seamlessly blend together to create a harmonious finish.



YARRA

| STONE | MOVEMENT | NATURAL | DEPTH |



YARRA - CARBON, YAR04G.



YARRA - IVORY, YAR01N.



ORGANIC
[adjective]
'relating to or derived from living matter.'



YARRA - PEBBLE, YAR02N.

Featuring mineral vein detailing imitating natural marble, the Yarra range of sumptuous stone-effect floor and wall tiles bring depth and character to any interior space. This collection of glazed porcelain products is suitable for both internal and external settings, in a versatile, neutral colour palette of Ivory, Pebble, Silver and Carbon. It boasts four rectified large format sizes from 600x300mm up to 1186x592mm and two finishes: Natural or Grip. Yarra provides the complete tiling solution with a 300x300mm square mosaic option and co-ordinating fittings also available.



YARRA



YARRA - IVORY, YAR01G/N.



YARRA - PEBBLE, YAR02G/N.



YARRA - SILVER, YAR03G/N.



YARRA - CARBON,
YAR04G/N.



YARRA MOSAICS - ALL
COLOURS.



Yarra introduces a nature-inspired ambiance to any space, infusing it with a sense of tranquillity and harmony. The warming colour palette and organic movement come together to create a calming and inviting atmosphere, linking it perfectly to the Raw Connect trend and Tactile Sensory.

F U J I

| ORGANIC | ELEGANT | NATURAL | MARBLE |



FUJI - PIETRA, FUJ04M.



FUJI - FUJ03M, CARRARA.



FUJI - CALACATTA, FUJ02M.

Introducing Fuji, an elegant range of marble-effect products, with four colour options to choose from – Statuary, Calacatta, Carrara and Pietra. Featuring four co-ordinating large-format rectified sizes, ranging from 600x300mm up to 1200x1200mm, and available in two finishes - Matt and Natural, which provides a PTV 36+ slip resistance rating for added versatility. Fuji is the perfect first choice for creating calming and tranquil design schemes for both residential and commercial applications.

SURFACE

[noun]

'relating to or found on the surface of something.'



F U J I



FUJI - STATUARY, FUJ01M.



FUJI - CALACATTA, FUJ02M.



FUJI - CARRARA, FUJ03M.



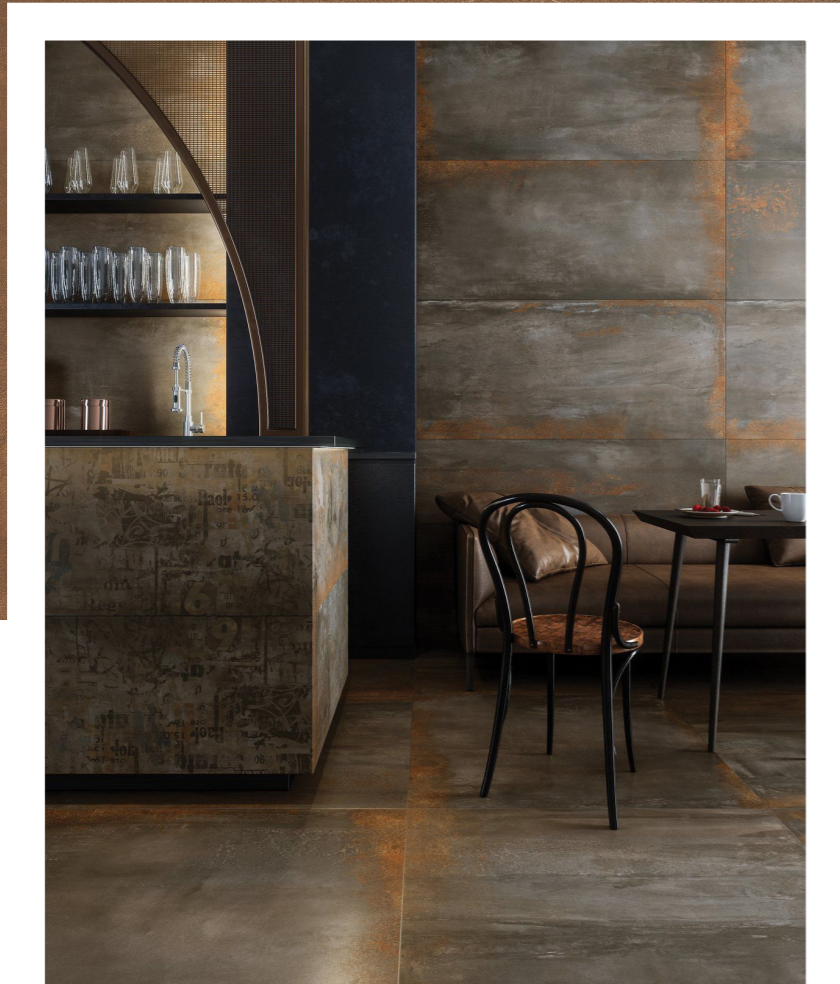
FUJI - PIETRA, FUJ04M.

Discover the diverse natural beauty of marble patterns, showcasing distinct vein details in various scales. Some patterns feature warm golden tones, adding an opulent touch to any space, while maintaining a timeless and elegant finish.



NEPTUNITE

| METAL | CHARACTER | SURFACE | TACTILE |



NEPTUNITE - ALUMINIUM, NPT03L.

Neptune is a glazed porcelain range that showcases the patina effect of rusted metals such as Silver, Aluminium & Copper. From different angles it can give the illusion of variable colour shades which creates a truly authentic look. With a wide selection of sizes ranging from 600x300mm up to 1200x600mm and in two finishes; Natural & Lapato, it also benefits from a range of co-ordinating fittings. Neptune adds character and surface interest to any installation.



PATINA
[noun]
'a gloss or sheen on a surface resulting from age or polishing.'



NEPTUNITE - SILVER, NPT02N, SILVER, NPT02L & ALUMINIUM NPT03L.



NEPTUNITE - SILVER, NPT02N, SILVER, NPT02L & ALUMINIUM NPT03L.

NEPTUNITE



NEPTUNITE - IVORY, NPT01L.



NEPTUNITE - SILVER, NPT02L.



NEPTUNITE - ALUMINIUM, NPT03L.

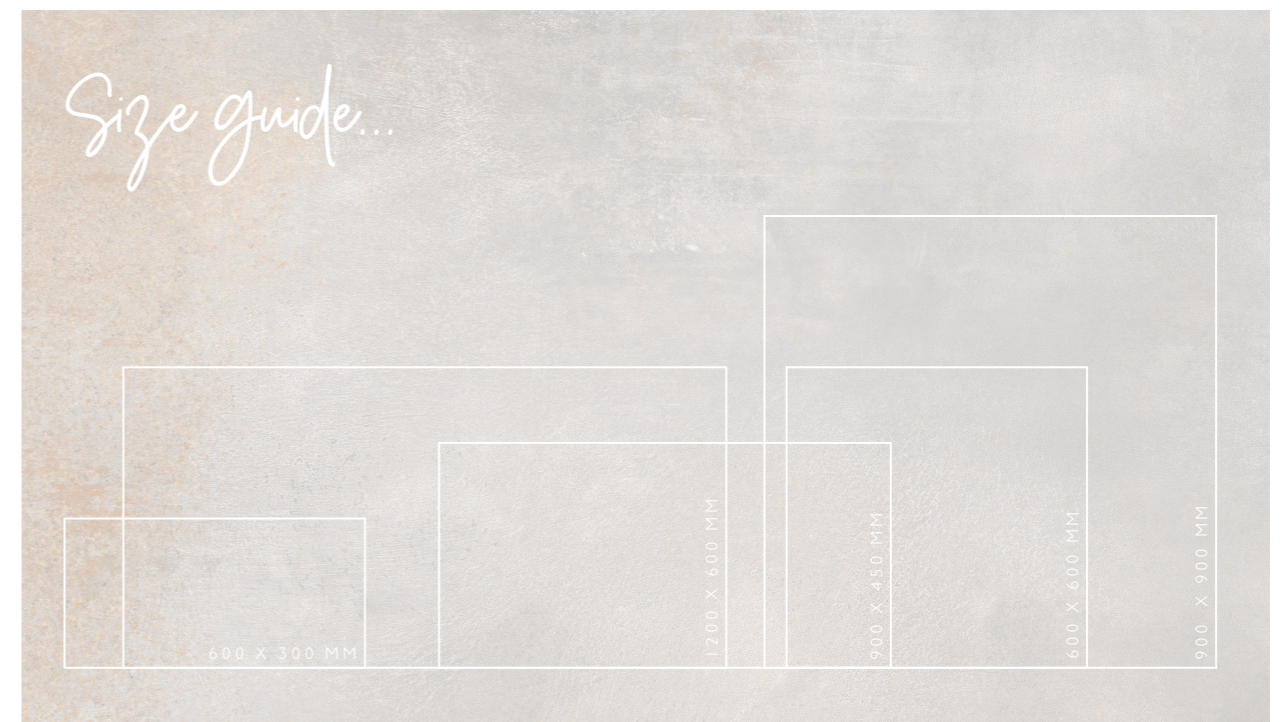


NEPTUNITE - COPPER, NPT04L.



NEPTUNITE - STEEL, NPT05L.

Incorporating a warming colour palette with diverse tonal qualities, Neptunite adds depth to the space and offers a tactile experience that flawlessly creates a sensory ambiance. The design evokes a sense of nostalgia with its retro style and aged surface appearance.

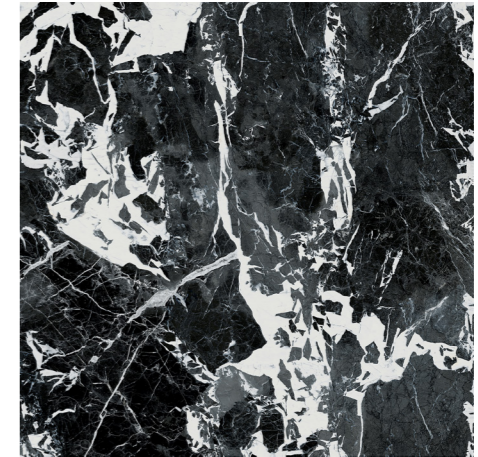




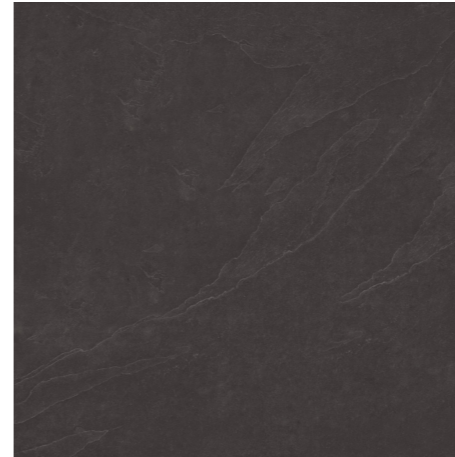
BUCKINGHAM WALL - LIGHT GREY, BUCK2L.



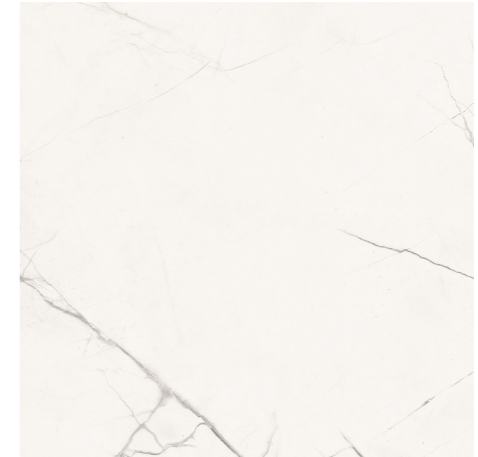
PORTLAND - SLATE, POR03N.



LUXX - NERO MARBLE, LUX07N.



RIVERSTONE - BLACK, RVN04S.



LUXX - IVORY CALACATTA, LUX01N.

| CONNECTED | RESET | OPTIMISTIC |

Our portfolio features an array of design styles, adaptable for different types of projects including commercial, residential, and outdoor spaces. The combination of functional performance and superior quality ensure seamless application. This edition delves into some of our latest projects, ranging from hand-painted tiles influenced by Japanese willow to a luxurious Victorian-inspired bathroom that features our striking Luxx range, creating an impressive statement, while still maintaining an elegant and timeless finish.

W I L L O W

P A T T E R N

L O N D O N , G R E A T E R L O N D O N



| PAINTED | JAPANESE | MURAL | PATTERN |

Inspired by the book 'The Willow Pattern Story' local ceramic artist Jasmine Simpson was commissioned to craft a custom tile mural of the Willow Pattern that would wrap around her client's bathroom, located in a contemporary town house in London's bustling high street. Having worked with Johnson Tiles previously on the handmade ceramic poppies 'Weeping Window' installation, produced to commemorate the centenary of World War I, Jasmine approached us again to help her bring the project to life.

In a nod to traditional blue and white ceramics, and to match with the commissioned design the go to material was Cobalt Oxide. Jasmine and the development team tested a few different blue underglazes, but none had the depth of true Cobalt. Similarly to watercolour paint, you can see the layers of pigment and the delicate

strokes of the brush using Cobalt, which fits perfectly with the desired aesthetic of the scheme. Jasmine also used Chinese pottery brushes in a range of sizes to paint the mural, she noted "their ability to hold lots of water and pigment made them perfect for painting washes and areas with lots of detail such as this."





Client Joseph A. Farrell stated "This project was a labour of love and creativity, both scientifically and artistically from start to finish. It involved painstaking curatorship of the artwork within the space, from the exact measurements of the walls and where the images would cross corners, to the detail required in the brushstrokes and the science behind how glazing and heat fluctuations can affect the colour.

Despite this, working with Jasmine was beyond simple. She understood the brief immediately but checked in regularly for feedback. Johnson Tiles were equally as pleasurable, accommodating and professional to work with. I have seldom come across a group of different professions all working in harmonised concert to get a project absolutely right!"



Jasmine, with our production team worked for several weeks on the production belt, where she laid out and hand painted each tile, ready for them to be initially fired. Once the tiles were painted, it was imperative Jasmine and the team thoroughly checked each one to correct any tiles with blemishes, as it became apparent that Cobalt Oxide could contaminate very quickly. The tiles were also hand dipped and glazed by our production team before being fired once more in one of our giant belt fed kilns. Once they had passed quality control and been twice fired, the tiles were packed into boxes for shipping. The mural tiles were then carefully despatched and fitted into the bathroom of the London town-house and paired with luxurious gold fittings for an opulent and unique finished look.



"Perfect for painting washes and areas with lots of detail such as this."

- JASMINE SIMPSON.

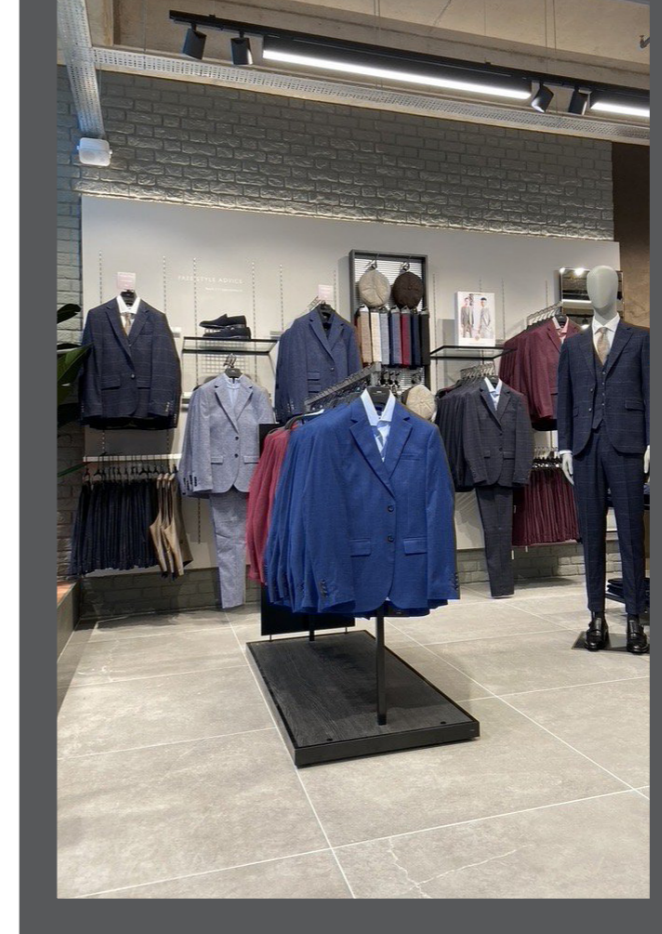
MOSSBROS

WOKING, SURREY

| STONE | PATTERN | NATURAL | DEPTH |



This latest store for the Moss Bros brand exudes sophistication and an airy, bright feel. Our Portland Slate Grip was specified in the large format size of 900x900mm to create a minimalistic vibe. This desirable stone effect range emulates textures from our natural surroundings for a tranquil weathered effect. The cool understated tone of Slate adds a calming backdrop to the stylised pieces within the store. Layered with textured rugs, the Portland range creates a luxurious aesthetic for a contemporary commercial space.



"The cool understated tone of Slate adds a calming backdrop to the stylised pieces."





Portland features a smoky colour palette composed of tones of Flint, Stone, Slate, and Basalt. Portland effortlessly delivers on style, showcasing a weathered stone effect available in large format sizes ranging from 600x300mm up to 1200x600mm.

Co-ordinating raised linear and inverted dot structure options provide textured flair. With a 2cm Grip+ finish also available in certain colours and a PTV 36+ slip resistance rating, Portland is synonymous with performance and presence.



LUX BATHROOM



| LUXURY | VICTORIAN | CHARACTER | MARBLE |

Interior Designer Mia Horton spends her life designing beautiful spaces for clients. When designing her own master bathroom suite she naturally wanted to combine all her favourite products to achieve a traditional yet luxurious looking bathroom to suit the character and charm of her Victorian property. To exaggerate the majesty of the high ceilings, she started by adding an arched feature wall to link to the period entrance of the en-suite bathroom.

The tile choices were the starting point for the bathroom scheme - the Scandinavian Interior Designer opted for a really clean, fresh look so white was always going to be the most prominent colour. With a keen eye for detail, she even managed to find an extractor fan that could be tiled in, adding to the sleek look. The coloured brass ware elevated the grandeur of the finished room.

It was very important to Mia to limit the amount of grout lines in the

shower area to deliver the clean, seamless finish. Our Luxx range of large format, marble-effect tiles was the perfect choice. The Luxx Nero Marble added the depth of colour she wanted for the floor, whilst the lighter Luxx Ivory Calacatta delivered a very subtle yet stylish vein design, oozing luxury. Mia selected the generous tile size of 1200x1200mm to coordinate perfectly with the other tiles across the room.

“The Minton Hollins collection had the perfect mix of matching tiles and trimmings.”



As the master colour for the Victorian style bathroom space, a traditional white gloss tile was chosen in a square format from the Minton Hollins Collection. With an extensive selection of coordinating tiles and fittings to choose from, Mia was able to create a continual flow from the floor to the window using the skirting and wall tiles. Being a perfectionist, the designer didn't want to add a modern tile trim to the period property, so using the Crampton Capping in the same range was the perfect substitute. The soft curved edge of the tile finished off the wall design beautifully and allowed the boxed-in ledges to flow from one wall to the next.

Being an Interior Designer sets the bar high when designing your own home - and this project certainly doesn't disappoint. Mia has had comments from family and friends who thought having so many different tiles in one space would be too much, but they have been proven wrong. Mia is hoping it will inspire others to be a bit more daring when planning the tiles for their bathrooms but stresses the importance of making sure it suits the style of the property.



"I love designing spaces that really work with the style of the property - this en-suite has just the right blend of Victorian vibe with modern fittings that I was after."

- MIA HORTON, MIA HORTON INTERIORS AND DESIGN.





IMAGE CREDIT: TEKURA.

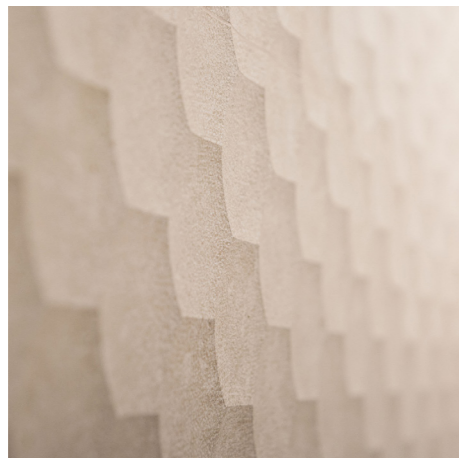


IMAGE CREDIT: TEKURA.

| DETAIL | INNOVATION | SURFACE |

We are thrilled about the upcoming 12 months, as we channel our creative energy and incorporate the latest key trends into our design and development processes. Our focus on innovation and attention to detail has led us to be launching a new slim elongated format to our product portfolio, featuring a captivating spectrum of colours, ranging from playful tones to classic and timeless neutrals. We remain committed to constant exploration and research, taking us on inspiring journeys to Milan and Bologna. Where we keep a close eye on the latest and emerging trends in the industry, and how we can translate these into exceptional tiles, adaptable to any design scheme or space.

T
X
E
N





WOOD SHELF LAY.



LUXX -SILVER MARBLE, LUXIIN.

CREDITS

TEKTURA.
SHUTTERSTOCK.
MATERIAL LAB.

NOTE

COLOUR PRINT AND HEX REFERENCES WILL VARY FROM DIFFERENT PRINTERS.

WHERE TO FIND US

Johnson Tiles
Harewood Street,
Tunstall,
Stoke on Trent,
Staffordshire,
ST6 5JZ

Tel: +44 (0)1782 575 575
Fax: +44 (0)1782 577 377
Email: info@johnson-tiles.com

Material Lab
10 Great Titchfield Street,
London,
W1W 8BB

Tel: +44 (0)20 7436 8629
Fax: +44 (0)20 7436 9031
Email: info@material-lab.co.uk

www.johnson-tiles.com





JOHNSON • TILES 
MADE IN THE UK SINCE 1901

Recycled...

THIS HAS BEEN PRINTED ON FSC® CERTIFIED PAPER, SUPPORTING OUR COMMITMENT TO USING SUSTAINABLE MATERIALS. ALONGSIDE THE RECYCLED CONTENT IN OUR UK MANUFACTURED TILES.