



MINTON HOLLINS

FINE ENGLISH TILES



# THE BEAUTIFUL STYLE AND TIMELESS APPEAL OF MINTON HOLLINS DESIGN.



MINTON HOLLINS  
FINE ENGLISH TILES

**F**ounded by an English potter, Minton Hollins specialises in fine ceramic tiles that have been produced in the UK for over 150 years. Made with a thicker base and a specialist glaze, Minton Hollins tiles are today still produced by Johnson Tiles in the Potteries, Staffordshire: an area synonymous with the finest of ceramic traditions.

The brand originated when the Minton family, who were heavily influenced by the Arts and Crafts movement and its pretty, rich-coloured, intricate flora and fauna patterns, began translating ornamental tableware designs inspired by William Morris and William De Morgan onto ceramic tiles - and in doing so established Britain's love of decorative tiling.

Minton Hollins tiles bring a feeling of exclusive style to any space; choose from highly-patterned features, delicate pictorials, rustic country engravings or displays of dramatic colour. With an array of choices available, this authentic collection brings you a beautiful range of design solutions for any style setting.

## 04

### Classics - Colours & Fittings

From Field Tiles and Borders to Skirtings and Finishing Strips, everything you need to create the perfect classical interior.

## 06

### Classics - Alice

Reflecting the natural beauty of the English garden, Alice's rich blue fronds and bright flowers create beautiful and unique patterns.

## 08

### Classics - Baroque

At once striking and elegant, Baroque's suite of co-ordinating and complementary patterns offer limitless opportunities to create visual drama.

## 10

### Classics - Beatrice

Regal and distinguished, Beatrice creates an oasis of serenity with its graceful colours and precisely repeating needlepoint patterns.

## 12

### Classics - Delft

Echoing the unique artistry from which it drew its inspiration, Delft paints a world of harmony in delicate white and blue.

## 14

### Classics - Louise

In a dashing display of style, Louise contrasts the restrained symmetry of a quartrefoil field tile with a richly flamboyant border.

## 16

### Classics - William Morris

The founding father of the Arts and Crafts movement, William Morris was a prolific artist who left behind an unparalleled legacy.

## 18

### Bevel

Sumptuous traditional colours are given a delicate translucence as they cascade across classic bevelled edges.

## 20

### Country Rustic

Perfectly replicating the antiquated appearance of subtle colour variation of many hand made ceramic tiles.

## 22

### Roker

The Roker collection brings a contemporary twist to the tiles discovered in the historical Grade II Roker Pier Complex, Tunnel and Lighthouse in Sunderland, UK.

## 24

### Botanicals

A captivating collection of intricate pen and ink botanical illustrations. The rich and vibrant watercolours are enhanced by subtle white and cream glazes.

## 26

### Engravings

Idyllic flora and fauna illustrations, reactive glazes adding subtle depth and classic colour combinations, bring these beautiful designs to life.

## 28

### Script

Etched letters and historic crackles create a relaxed atmosphere in both contemporary and traditional interiors.

## 30

### Our Company & Technical Advice

A brief overview of Johnson Tiles along with information on installation, cleaning and maintenance.

# CLASSICS - COLOURS & FITTINGS

From Field Tiles and Borders to Skirtings and Finishing Strips, everything you need to create the perfect classical interior.

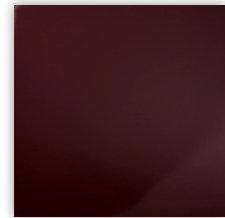
## Plain Colour Options



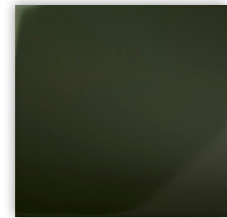
White



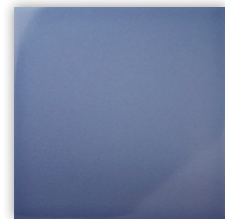
Ivory



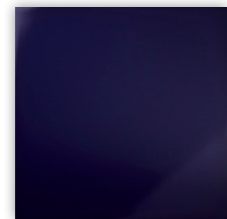
Burgundy



Dark Green



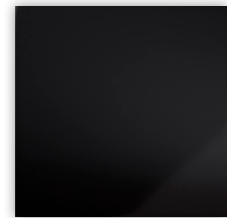
China Blue



Victorian Blue

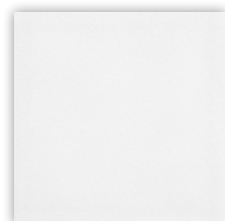


Earl Grey



Black

## Crackle Glaze Options



White Crackle

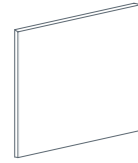


Cream Crackle

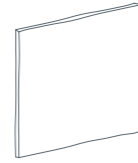


Moss Crackle

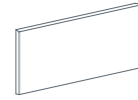
## Field, Border and Fitting Options



**Field**  
150 x 150 x 8mm (6" x 6" x 5/16")  
MH1A Victorian Blue  
MH2A China Blue  
MH8A Earl Grey  
MH9A Burgundy  
MH10A Ivory  
MH16A Black  
MH20A White  
MH74A Dark Green  
MHCRZ1 White Crackle  
MHCRZ2 Cream Crackle



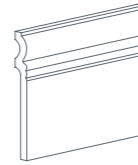
**Studio Field**  
150 x 150 x 8mm (6" x 6" x 5/16")  
SMDF1A White Crackle  
SMDF2A Cream Crackle  
SMDF3A Moss Crackle  
**Note:** Studio Field 150 x 150mm tiles have a rustic edge to the tile.



**Border**  
150 x 75 x 8mm (6" x 3" x 5/16")  
MH1B Victorian Blue  
MH2B China Blue  
MH8B Earl Grey  
MH9B Burgundy  
MH10B Ivory  
MH16B Black  
MH20B White  
MH74B Dark Green  
MHCRB1 White Crackle  
MHCRB2 Cream Crackle



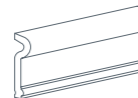
**Finishing Strip**  
150 x 12 x 8mm (6" x 1/2" x 5/16")  
MFS1 Victorian Blue  
MFS2 China Blue  
MFS8 Earl Grey  
MFS9 Burgundy  
MFS10 Ivory  
MFS16 Black  
MFS20 White  
MFS74 Dark Green  
MFSCR1 White Crackle  
MFSCR2 Cream Crackle  
MFSCR3 Moss Crackle



**Atlas Skirting**  
150 x 150 x 17mm (6" x 6" x 11/16")  
MAS1 Victorian Blue  
MAS2 China Blue  
MAS8 Earl Grey  
MAS9 Burgundy  
MAS10 Ivory  
MAS16 Black  
MAS20 White  
MAS74 Dark Green  
MASCRI White Crackle  
MASCRII Cream Crackle  
MASCRII Moss Crackle



**Atlas Skirting S/E**  
150 x 17 x 17mm (6" x 11/16" x 11/16")  
MAS1E Victorian Blue  
MAS2E China Blue  
MAS8E Earl Grey  
MAS9E Burgundy  
MAS10E Ivory  
MAS16E Black  
MAS20E White  
MAS74E Dark Green  
MASC1E White Crackle  
MASC2E Cream Crackle  
MASC3E Moss Crackle



**Crampton Capping**  
150 x 75 x 22mm (6" x 3" x 7/8")  
MCC1 Victorian Blue  
MCC2 China Blue  
MCC8 Earl Grey  
MCC9 Burgundy  
MCC10 Ivory  
MCC16 Black  
MCC20 White  
MCC74 Dark Green



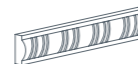
**Crampton Capping Corner**  
75 x 75 x 21.5mm (3" x 3" x 7/8")  
MCC1C Victorian Blue  
MCC2C China Blue  
MCC8C Earl Grey  
MCC9C Burgundy  
MCC10C Ivory  
MCC16C Black  
MCC20C White  
MCC74C Dark Green



**Crampton Capping S/E**  
75 x 21.5 x 21.5mm (3" x 7/8" x 7/8")  
MCC1E Victorian Blue  
MCC2E China Blue  
MCC8E Earl Grey  
MCC9E Burgundy  
MCC10E Ivory  
MCC16E Black  
MCC20E White  
MCC74E Dark Green



**Rolling Leaf Border**  
150 x 75 x 10mm (6" x 3" x 5/16")  
MRL1 Victorian Blue  
MRL2 China Blue  
MRL8 Earl Grey  
MRL9 Burgundy  
MRL10 Ivory  
MRL16 Black  
MRL20 White  
MRL74 Dark Green



**Rope Border**  
150 x 35 x 18.5mm (6" x 1 3/8" x 3/4")  
MRB1 Victorian Blue  
MRB2 China Blue  
MRB8 Earl Grey  
MRB9 Burgundy  
MRB10 Ivory  
MRB16 Black  
MRB20 White  
MRB74 Dark Green



**Rope Border S/E**  
35 x 18.5 x 18.5mm (1 3/8" x 3/4" x 3/4")  
MRB1E Victorian Blue  
MRB2E China Blue  
MRB8E Earl Grey  
MRB9E Burgundy  
MRB10E Ivory  
MRB16E Black  
MRB20E White  
MRB74E Dark Green

LOVE



Colours & Fittings Earl Grey and White Plain Field and Border with Earl Grey Crampton Capping and Atlas Skirting



Alice Blue Decorative Field and Border



Alice Blue Decorative Field and Border with Ivory and Victorian Blue Colours & Fittings ▲

## CLASSICS - ALICE

Reflecting the natural beauty of the English garden, Alice's rich blue fronds and bright flowers create beautiful and unique patterns.



ALIC3E Blue  
Decorative Field  
150 x 150 x 8mm (6" x 6" x 5/16")



ALIC3B Blue  
Decorative Border  
150 x 75 x 8mm (6" x 3" x 5/16")

# CLASSICS - BAROQUE

At once striking and elegant, Baroque's suite of co-ordinating and complementary patterns offer limitless opportunities to create visual drama.



ANF2 Burgundy  
Decorative Field  
150 x 150 x 8mm (6" x 6" x 5/16")



ANB2 Burgundy  
Decorative Border  
150 x 75 x 8mm (6" x 3" x 5/16")



ANF3 Green  
Decorative Field  
150 x 150 x 8mm (6" x 6" x 5/16")



ANB3 Green  
Decorative Border  
150 x 75 x 8mm (6" x 3" x 5/16")

Baroque Burgundy Decorative Field and Border with Burgundy and Ivory Colours & Fittings ▼





Beatrice Green Decorative Field with Moss Crackle Colours & Fittings



Beatrice Green Decorative Field and Border with Ivory and Dark Green Colours & Fittings ▲

## CLASSICS - BEATRICE

Regal and distinguished, Beatrice creates an oasis of serenity with its graceful colours and precisely repeating needlepoint patterns.



BTCE4E Maroon  
Decorative Field  
150 x 150 x 8mm (6" x 6" x 5/16")



BTCE4B Maroon  
Decorative Border  
150 x 75 x 8mm (6" x 3" x 5/16")



BTCE5E Green  
Decorative Field  
150 x 150 x 8mm (6" x 6" x 5/16")



BTCE5B Green  
Decorative Border  
150 x 75 x 8mm (6" x 3" x 5/16")

# CLASSICS - DELFT

Echoing the unique artistry from which it drew its inspiration, Delft paints a world of harmony in delicate white and blue.



DLF1 White/Blue  
Decorative Field  
150 x 150 x 8mm (6" x 6" x 5/16")



DLI10 White/Blue  
Decorative Inset  
150 x 150 x 8mm (6" x 6" x 5/16")



DLI11 White/Blue  
Decorative Inset  
150 x 150 x 8mm (6" x 6" x 5/16")



DLB1 White/Blue  
Decorative Border  
150 x 75 x 8mm (6" x 3" x 5/16")

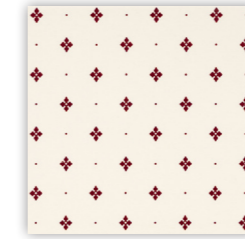
Delft White/Blue Decorative Field, Insets and Border with White and Blue Colours & Fittings ▾



Delft Decorative Field, Insets and Border  
with China Blue Colours & Fittings

## CLASSICS - LOUISE

In a dashing display of style, Louise contrasts the restrained symmetry of a quartrefoil field tile with a richly flamboyant border.

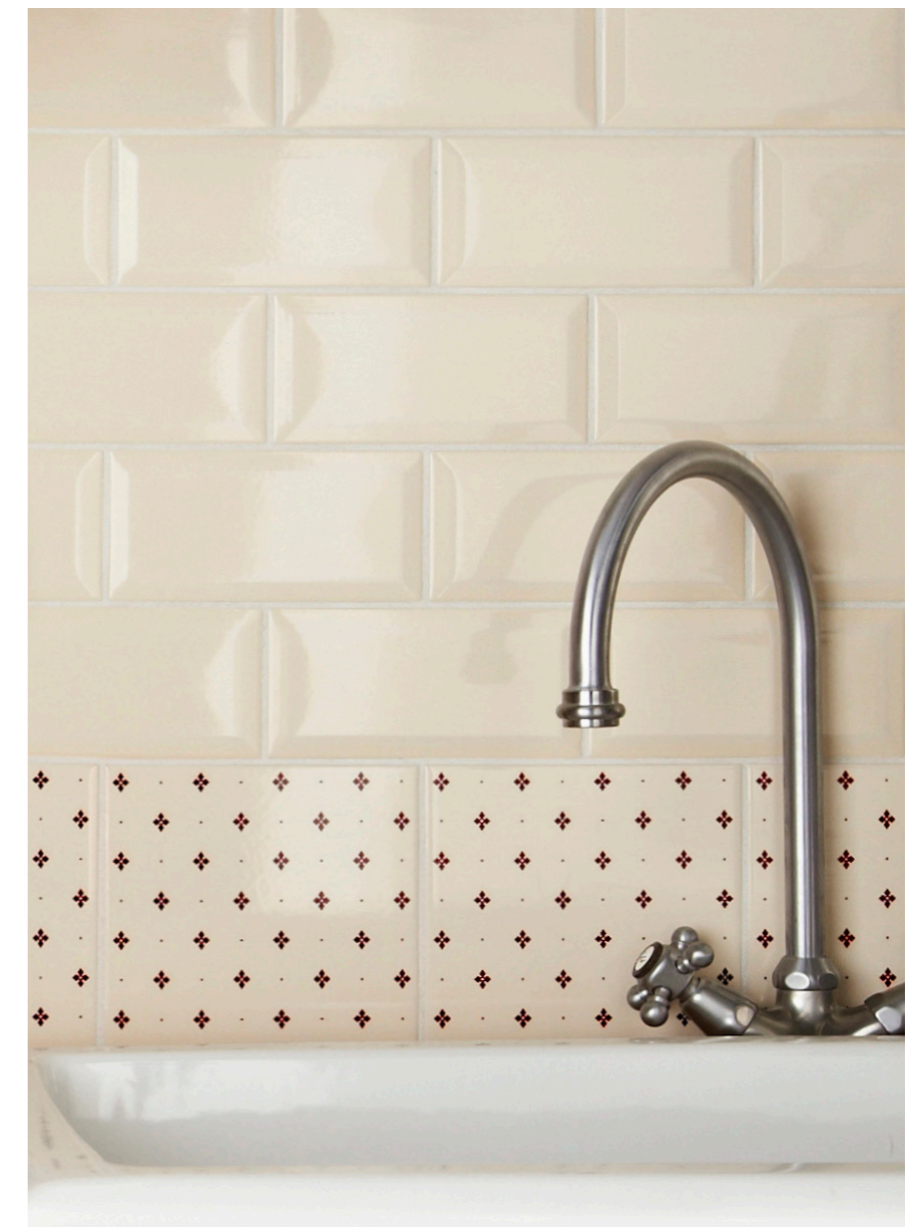


LOUS4E Maroon  
Decorative Field  
150 x 150 x 8mm (6" x 6" x 5/16")



LOUS4B Maroon  
Decorative Border  
150 x 75 x 8mm (6" x 3" x 5/16")

Louise Maroon Decorative Field with Ivory Bevel Field ▾







William Morris Seaweed Decorative Field ▲

## CLASSICS - WILLIAM MORRIS

The founding father of the Arts and Crafts movement, William Morris was a prolific artist who, along with his associates at Morris and Co, left behind an unparalleled legacy of outstanding designs in ceramics, glass, textiles, artwork and furniture.



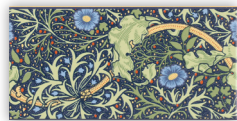
WMSWIF Seaweed  
Decorative Field  
150 x 150 x 8mm (6" x 6" x 5/16")



WMCRIF Chrysanthemum  
Decorative Field  
150 x 150 x 8mm (6" x 6" x 5/16")



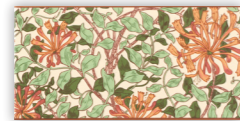
WMHSIF Honeysuckle  
Decorative Field  
150 x 150 x 8mm (6" x 6" x 5/16")



WMSWIB Seaweed  
Decorative Border  
150 x 75 x 8mm (6" x 3" x 5/16")



WMCRIB Chrysanthemum  
Decorative Border  
150 x 75 x 8mm (6" x 3" x 5/16")



WMHSIB Honeysuckle  
Decorative Border  
150 x 75 x 8mm (6" x 3" x 5/16")



William Morris Chrysanthemum Decorative Field



Bevel Raspberry Field

## BEVEL

Sumptuous traditional colours are given a delicate translucence as they cascade across classic bevelled edges.



**MBV20 White**  
Bevel Field  
150 x 75 x 9mm (6" x 3" x 3/8")



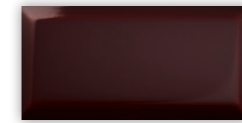
**MBV21 Biscuit**  
Bevel Field  
150 x 75 x 9mm (6" x 3" x 3/8")



**MBV10 Ivory**  
Bevel Field  
150 x 75 x 9mm (6" x 3" x 3/8")



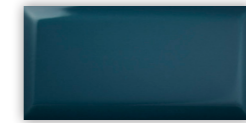
**MBV18 Raspberry**  
Bevel Field  
150 x 75 x 9mm (6" x 3" x 3/8")



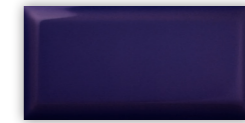
**MBV9 Burgundy**  
Bevel Field  
150 x 75 x 9mm (6" x 3" x 3/8")



**MBV2 China Blue**  
Bevel Field  
150 x 75 x 9mm (6" x 3" x 3/8")



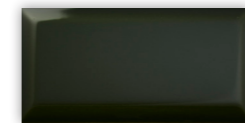
**MBV44 Ocean Blue**  
Bevel Field  
150 x 75 x 9mm (6" x 3" x 3/8")



**MBV1 Victorian Blue**  
Bevel Field  
150 x 75 x 9mm (6" x 3" x 3/8")



**MBV4 Apple Green**  
Bevel Field  
150 x 75 x 9mm (6" x 3" x 3/8")



**MBV74 Dark Green**  
Bevel Field  
150 x 75 x 9mm (6" x 3" x 3/8")



**MBV8 Earl Grey**  
Bevel Field  
150 x 75 x 9mm (6" x 3" x 3/8")



**MBV16 Black**  
Bevel Field  
150 x 75 x 9mm (6" x 3" x 3/8")

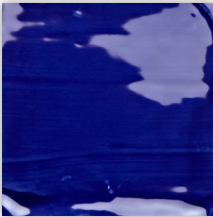
Bevel White, Victorian Blue, China Blue, Ocean Blue, Raspberry and Apple Green Field ▼



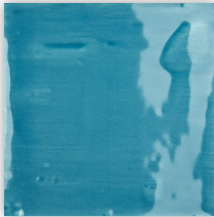
# COUNTRY RUSTIC

Perfectly replicating the antiquated appearance of subtle colour variation characteristics of many old hand made ceramic tiles.

## Plain Colour Options



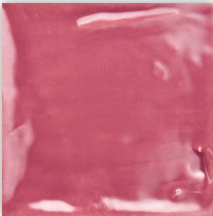
**CRFV Victorian Blue**  
Rustic Field  
100 x 100 x 9.5mm (4" x 4" x 3/8")



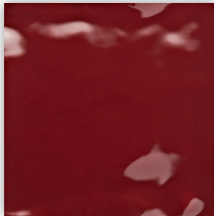
**CRFO Ocean Blue**  
Rustic Field  
100 x 100 x 9.5mm (4" x 4" x 3/8")



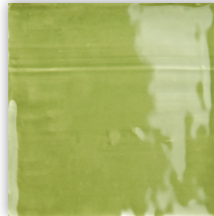
**CRFC China Blue**  
Rustic Field  
100 x 100 x 9.5mm (4" x 4" x 3/8")



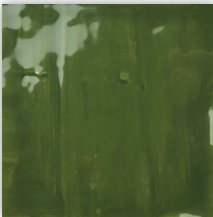
**CRFR Raspberry**  
Rustic Field  
100 x 100 x 9.5mm (4" x 4" x 3/8")



**CRFM Burgundy**  
Rustic Field  
100 x 100 x 9.5mm (4" x 4" x 3/8")



**CRFA Apple Green**  
Rustic Field  
100 x 100 x 9.5mm (4" x 4" x 3/8")



**CRFD Dark Green**  
Rustic Field  
100 x 100 x 9.5mm (4" x 4" x 3/8")



**CRFI Ivory**  
Rustic Field  
100 x 100 x 9.5mm (4" x 4" x 3/8")



**CRFE Earl Grey**  
Rustic Field  
100 x 100 x 9.5mm (4" x 4" x 3/8")



**CRFB Black**  
Rustic Field  
100 x 100 x 9.5mm (4" x 4" x 3/8")



**CRF1A White**  
Rustic Field  
100 x 100 x 9.5mm (4" x 4" x 3/8")  
150 x 150 x 9.5mm (6" x 6" x 3/8")



**CRF2A Cream**  
Rustic Field  
100 x 100 x 9.5mm (4" x 4" x 3/8")  
150 x 150 x 9.5mm (6" x 6" x 3/8")

## Crackle Glaze Options



**CRFC1A White Crackle**  
Rustic Field  
100 x 100 x 9.5mm (4" x 4" x 3/8")



**CRFC2A Cream Crackle**  
Rustic Field  
100 x 100 x 9.5mm (4" x 4" x 3/8")



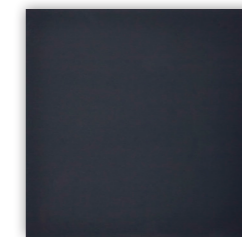


# ROKER

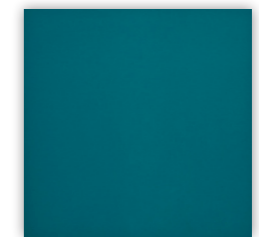
The Roker collection brings a contemporary twist to the tiles discovered in the historical Grade II Roker Pier Complex, Tunnel and Lighthouse in Sunderland, UK and is available in a number of colours to complement your scheme.



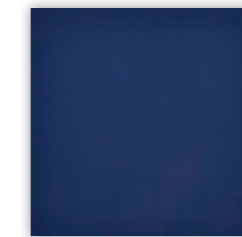
Sea Mist



Stormy Retreat



Teal Ripple

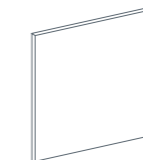


Scuba Blue

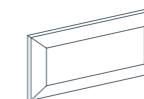


Volcanic Splash

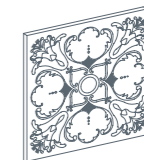
## Field, Border and Fitting Options



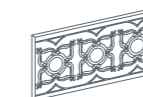
**Field**  
150 x 150 x 8mm (6" x 6" x 5/16")  
ROSM I A Sea Mist  
ROSR I A Stormy Retreat  
ROSB I A Scuba Blue  
ROTR I A Teal Ripple  
ROVS I A Volcanic Splash



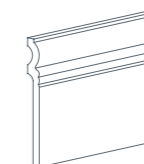
**Bevel Field**  
150 x 75 x 9mm (6" x 3" x 3/8")  
RBSM I A Sea Mist  
RBSR I A Stormy Retreat  
RBSB I A Scuba Blue  
RBTR I A Teal Ripple  
RBVS I A Volcanic Splash



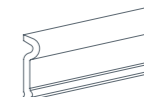
**Embossed Field**  
150 x 150 x 8mm (6" x 6" x 5/16")  
ROSM I E Sea Mist  
ROSR I E Stormy Retreat  
ROSB I E Scuba Blue  
ROTR I E Teal Ripple  
ROVS I E Volcanic Splash



**Embossed Border**  
150 x 75 x 8mm (6" x 3" x 5/16")  
ROSM I B Sea Mist  
ROSR I B Stormy Retreat  
ROSB I B Scuba Blue  
ROTR I B Teal Ripple  
ROVS I B Volcanic Splash



**Atlas Skirting**  
150 x 150 x 17mm (6" x 6" x 11/16")  
RSSM I A Sea Mist  
RSSR I A Stormy Retreat  
RSSB I A Scuba Blue  
RSTR I A Teal Ripple  
RSVS I A Volcanic Splash

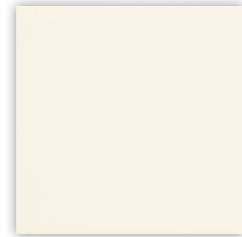


**Crampton Capping**  
150 x 75 x 22mm (6" x 3" x 7/8")  
RCSM I A Sea Mist  
RCSR I A Stormy Retreat  
RCSB I A Scuba Blue  
RCTR I A Teal Ripple  
RCVS I A Volcanic Splash

# BOTANICALS

A captivating collection of intricate pen and ink botanical illustrations. The rich and vibrant watercolours are enhanced by subtle white and cream glazes.

## Colour Options



White

Cream

## Panel Options



**Botanical Panel A**  
150 x 150 x 8mm (6" x 6" x 5/16")  
(450 x 300mm - 6 Tile Panel)

BSP1A White  
BSP2A Cream



**Botanical Panel D**  
150 x 150 x 8mm (6" x 6" x 5/16")  
(450 x 300mm - 6 Tile Panel)

BSP1D White  
BSP2D Cream



**Botanical Panel I**  
150 x 150 x 8mm (6" x 6" x 5/16")  
(450 x 300mm - 6 Tile Panel)

BSP1I White  
BSP2I Cream



**Botanical Panel K**  
150 x 150 x 8mm (6" x 6" x 5/16")  
(450 x 300mm - 6 Tile Panel)

BSPM2K Cream



**Botanical Panel N**  
150 x 150 x 8mm (6" x 6" x 5/16")  
(450 x 300mm - 6 Tile Panel)

BSPM2N Cream



**Botanical Panel S**  
150 x 150 x 8mm (6" x 6" x 5/16")  
(450 x 300mm - 6 Tile Panel)

BSPM2S Cream





## ENGRAVINGS

Idyllic flora and fauna illustrations, reactive glazes adding subtle depth and classic colour combinations bring these beautiful designs to life.



**ENG1E White Crackle**  
Butterfly Set of 3 Rustic Decorative Insets  
100 x 100 x 9.5mm (4" x 4" x 3/8")



**ENG1G White Crackle**  
Dragonfly Set of 3 Rustic Decorative Insets  
100 x 100 x 9.5mm (4" x 4" x 3/8")



**ENG2E Cream Crackle**  
Butterfly Set of 3 Rustic Decorative Insets  
100 x 100 x 9.5mm (4" x 4" x 3/8")



**ENG2G Cream Crackle**  
Dragonfly Set of 3 Rustic Decorative Insets  
100 x 100 x 9.5mm (4" x 4" x 3/8")



Script White Crackle - Script 'Plain' with White Crackle Border ▲

## SCRIPT

Etched letters and historic crackles create a relaxed atmosphere in both contemporary and traditional interiors.

### Colour Options



MBVS1M White  
Bevel - Script 'Etched'  
150 x 75 x 9mm (6" x 3" x 5/16")



MBVS2M Ivory  
Bevel - Script 'Etched'  
150 x 75 x 9mm (6" x 3" x 5/16")



MHCS1M White  
Crackle - Script 'Plain'  
150 x 75 x 8mm (6" x 3" x 5/16")



MHCS2M Cream  
Crackle - Script 'Plain'  
150 x 75 x 8mm (6" x 3" x 5/16")

**Note:** Script is available as cartons of 9 tiles, which contain a mixture of 3 of each of the Herbs, Cheese and Wines script choices.

All script choices are random.

### Script Options

Herbs:

*Farragon*   *Dill*  
*Thyme*   *Cinnamon*  
*Sage*   *Cardamom*  
*Parsley*   *Turmeric*  
*Rosemary*   *Fennel*

Cheese:

*Cheddar*   *Boursin*  
*Ricotta*   *Gouda*  
*Stilton*   *Wensleydale*  
*Roquefort*   *Brie*  
*Edam*   *Mozzarella*

Wine:

*Chablis*   *Rioja*  
*Muscadet*   *Pinot Noir*  
*Merlot*   *Chardonnay*  
*Chianti*   *Cabernet*  
*Soave*   *Reisling*



Script Ivory Bevel - Script 'Etched' with Ivory Bevel Field

## OUR COMPANY

We are the UK's only large-scale manufacturer of ceramic tiles. We've been designing and making ceramic tiles since 1901, proudly staying true to Johnson Tiles' roots in the Potteries' heartland of Stoke-on-Trent. To strengthen our portfolio of sustainable, British-made products, our design team travels the world sourcing complementary collections of porcelain and ceramic floor and wall tiles. Our comprehensive range has been used for interior design projects in homes, schools, universities, hotels, hospitals, commercial developments and leisure facilities across the world.

Being a celebrated UK heritage brand is part of our culture, but the Johnson Tiles success story is built on innovation. We've dedicated two decades to finding better ways to operate. Cutting energy consumption, diverting waste and reducing carbon emissions. Our environmental credentials set out our story so far, but we're constantly improving. Making sure our set-up isn't just world class, but also making a difference on the bigger issues that impact us all – at a local and global level.



### Practice makes perfect

We've been making beautiful, high-quality ceramic tiles for well over a century, alongside offering selected ranges of porcelain floor tiles. During this period we've never stopped investing time, energy and resource into maintaining our position as market-leaders – not just in terms of product quality and choice, but also as a trusted source of service, design and technical expertise.



### Product choice

Whatever the project, however large or small the budget, and no matter how demanding the technical challenges, you can be sure Johnson Tiles will supply a perfect match for your requirements. From our most affordable ranges upwards, you can be assured all our tiles fully comply with all relevant quality standards.



### Inspirational design

Based at our in-house studio in Stoke on Trent, our design and development team is driven by a true creative passion; open to inspiration from any source, and willing to travel to every corner of the globe to seek out new ideas and exciting materials. We're always happy to share our creativity with customers in search of design inspiration.



### Service excellence

For us, excellent products are only part of what makes a market-leader. We're utterly dedicated to helping every customer get the very best from our tiles – from ensuring prompt and efficient supply of complex orders, carrying extensive stock, UK wide distribution and providing first-class technical support, to guidance on every aspect of usage and application.



### Green tiles

We're proud that Johnson Tiles has been at the forefront of sustainable manufacturing for over 20 years. Today, every tile we make contains up to 20% recycled material. In addition, the majority of our materials are sourced within 250 miles of our factory, and as well as re-using all of our water, we save power by redirecting heat back into our kilns.

## TECHNICAL ADVICE

### Installation advice

#### Codes of practice

All fixing of floor and cladding tiles should be in accordance with the following codes of practice guidelines:

BS5385 Part 1 – 1995

(Code of practice for the design and installation of internal wall tiling and mosaics in normal conditions).

BS5385 Part 2 – 2006

(Code of practice for the design and installation of external ceramic wall tiling and mosaics).

BS5385 Part 3 – 1989

(Code of practice for the design and installation of ceramic floor tiles and mosaics).

BS5385 Part 4 – 1992

(Code of practice for ceramic tiling and mosaics in specific conditions).

BS8000 Section 11.1 – 1989

(Workmanship on Building Sites, Part 11, Code of practice for wall and floor tiling).

Floor and cladding tiles are made from quality refined raw materials and are class Bla (porcelain) products. As such they require the use of polymer modified adhesives (classification C2\*) and grouts specially formulated for fixing and grouting of porcelain tiles.

#### Substrates

Before tiling is commenced, it is important to ensure that the correct minimum curing periods have been observed for all substrates:

**Concrete** – 6 weeks

**Screed (non modified)** – 3 weeks

**Rendering (non modified)** – 2 weeks

**Gypsum Plastering** – 4 weeks

**Brickwork/Blockwork** – 6 weeks

Accuracy of the substrate must be checked to ensure that the guidance given in BS5385 has been achieved i.e. "local variations in level for a nominally flat floor or wall should be such that, when checked with a 2m straight-edge, any gap under the straight-edge between points of contact does not exceed 3mm".

#### Movement joints

The location, type and scope of all movement joints must be ascertained prior to any fixing works. All structural joints must be followed through to the face of the tile at full width with intermediate movement joints (minimum 6mm wide) being situated at:

#### Changes of plane

#### Wall/floor junctions

#### Where tiling abuts other materials

Additionally at 3 to 4.5m maximum centres for wall tiling and 8 to 10m maximum bay centres for floor tiling (in suspended floors the bay dimensions should be reduced by providing additional joints over supporting walls and beams).

Movement joints can either be filled with a suitable backer, bond breaker and filler (e.g. epoxy polysulphide – please check with manufacturer for suitability) or be of the pre-formed variety.

#### Design/Layout

Consideration to locations of plane changes and room sizes should be undertaken to ensure the best tile size is selected to minimise cutting and improve aesthetics.

#### Adhesives

Adhesives should be in accordance with BS EN 12004, Class C2\*. Particular adhesive choice will be governed by the substrate.

#### Grouts

The choice of grout type should reflect the expected service conditions of the installation.

For general floor tiling grouts should be class CG2.

For floors subject to frequent wetting i.e. showers and pool halls grout should be class CG2 for hard water areas or RG1 for soft water areas.

Where hygiene is important i.e. commercial kitchens and hospitals grout should be class RG1.

#### Fixing tiles

All floor tiles should be fixed with a solid bed of adhesive, this ensures maximum durability and strength within the installation and long term adhesion performance. This is achieved with the use of a notched solid bed trowel. It is good practice to periodically remove a recently fixed tile to ensure that the correct bedding is being achieved and maintained. When fixing all tiles care must be taken to ensure that no lipping of tiles occurs.

### Cleaning and maintenance

#### Wall tiles

##### Builders clean

This should be undertaken prior to the wall being brought into service. The builders clean removes cement and residual film left over from the grouting process and is a one-off cleaning process. It is important that this is carried out professionally and thoroughly as any grout residues left behind will act as a key for dirt.

##### Cementitious grouts

The use of a mild acid decementing solution followed by thorough rinsing will remove all but the most stubborn of cement residues.

##### Epoxide grouts

It is essential that ALL residues from the grouting process are removed from the tile's surface before the resin cures. If you don't do this, it will become a very difficult and expensive cleaning process using gel-type epoxide removers.

Glazed wall tiles can be wiped with warm water to which a neutral or nearly neutral detergent has been added.

##### Periodic deep cleaning

Occasionally foreign matter may cause surface marks on tiles. If the surface mark cannot be removed with the normal cleaning procedures detailed above, other cleaning materials should be considered. It is advisable to try a small inconspicuous area first.

**Paint** – Paint remover.

**Organic Stains** – Bleach or a one-off treatment with washing soda.

**Rust** – Masonry cleaner.

**Rubber** – Abrasive powder or liquid but not on glazed tiles.

**Oil, Fat, Grease** – Detergent or degreasers.

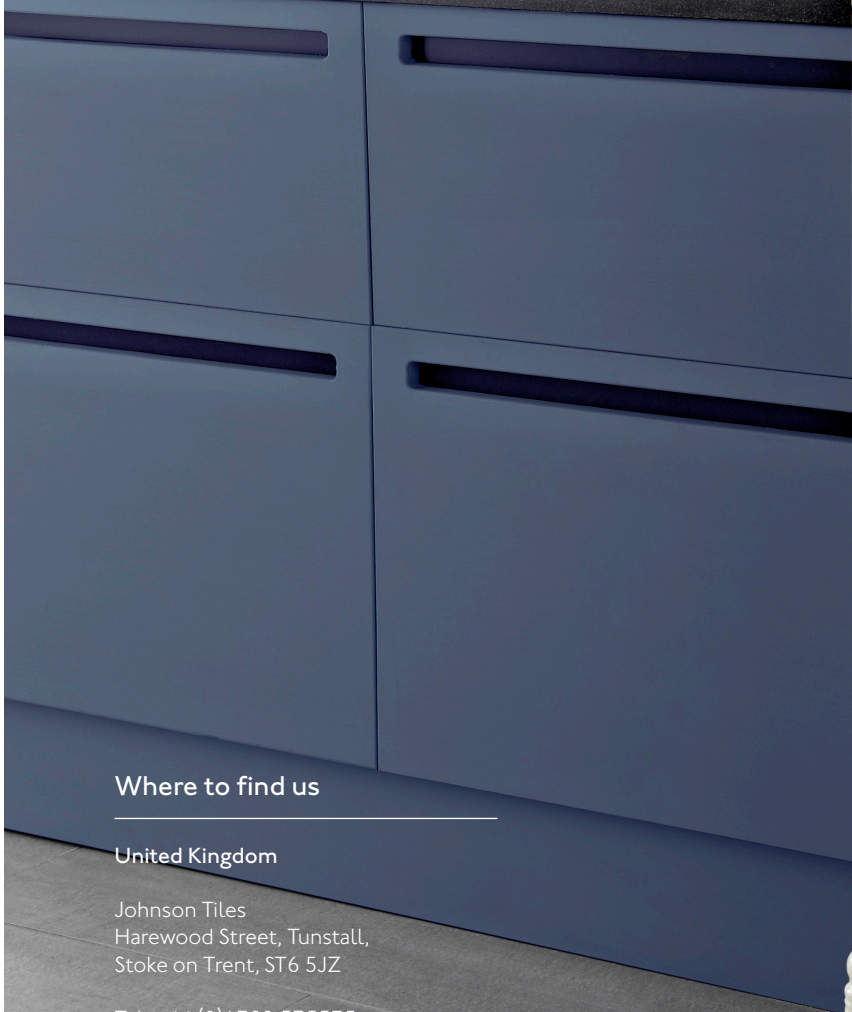
**Mould Growth** – Household bleach or proprietary cleaner.

**Tea, Coffee, Ink** – Household bleach or proprietary cleaner.

**Abrasive powders or cleaners should never be used on glazed tiles.**

**For more information please call the Johnson Tiles Technical helpline on +44 (0)1782 524111 or email [technical@johnson-tiles.com](mailto:technical@johnson-tiles.com).**





## Where to find us

---

### United Kingdom

Johnson Tiles  
Harewood Street, Tunstall,  
Stoke on Trent, ST6 5JZ

Tel: +44 (0)1782 575575  
Fax: +44 (0)1782 577377  
Email: [info@johnson-tiles.com](mailto:info@johnson-tiles.com)  
[www.johnson-tiles.com](http://www.johnson-tiles.com)

Material Lab  
10 Great Titchfield Street,  
London, W1W 8BB

Tel: +44 (0)20 7436 8629  
Fax: +44 (0)20 7436 9031  
Email: [info@material-lab.co.uk](mailto:info@material-lab.co.uk)  
[www.material-lab.co.uk](http://www.material-lab.co.uk)



**MINTON HOLLINS**  
FINE ENGLISH TILES